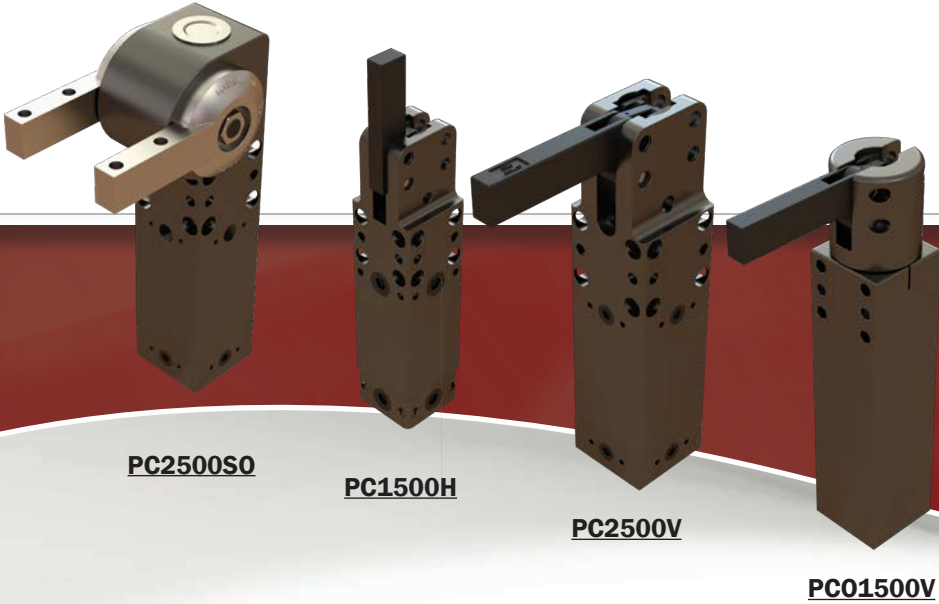


Power Clamp Catalog

Pneumatically Operated, Heavy Duty Power Clamps



PC2500SO

PC1500H

PC2500V

PC01500V

Various Arm Orientations and Openings Available

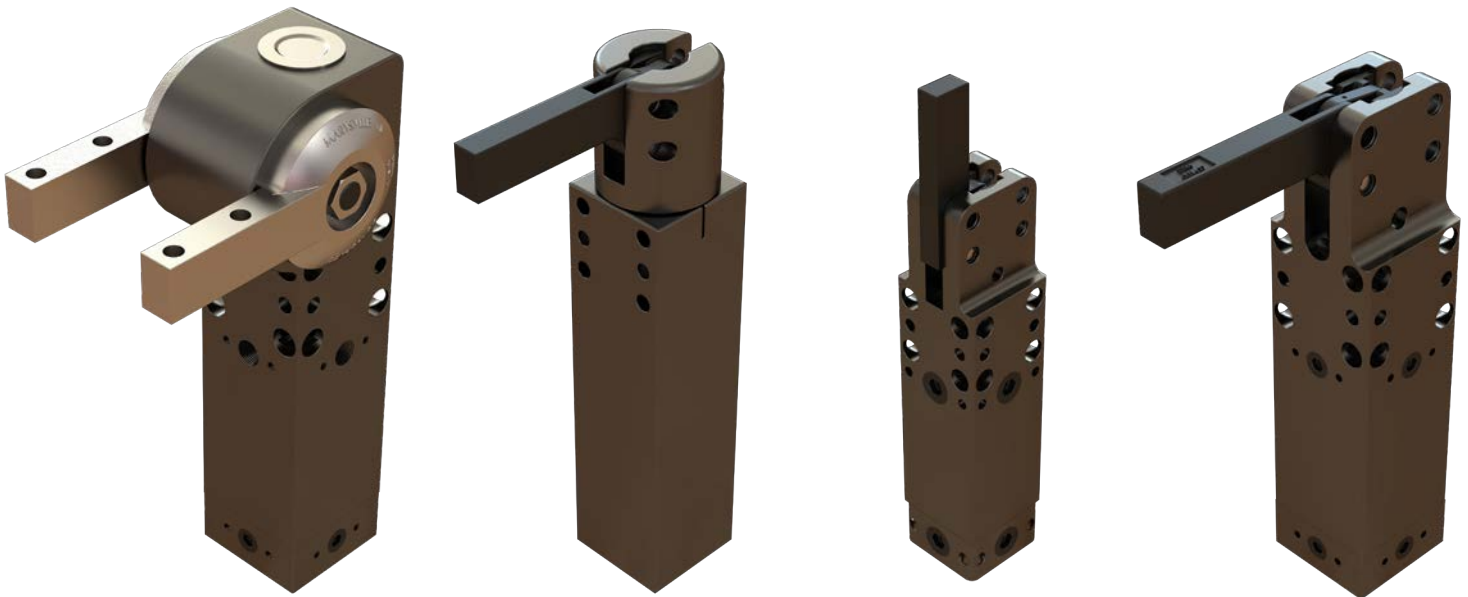
Simple Design Utilizing Toggle Linkage

Light Weight and Durable



TABLE OF CONTENTS

Sealed Offset Power Clamp Description	3
PC 1500 SO Power Toggle Clamp	4
PC 2500 SO Power Toggle Clamp.....	5
PC 1500 V Power Toggle Clamp.....	6
PC 1500 H Power Toggle Clamp	7
PC 2500 V Power Toggle Clamp	8
PC 2500 H Power Toggle Clamp	9
Omni-Head Clamp Description.....	10
PCO 1500 V Omni Clamp.....	11
PCO 1500 H Omni Clamp	12
Rotary-Linear Clamp Description	13
15-90 CWR / CCR Rotary Liner Power Clamp	14
Accessories.....	15
Global Sales Support Team	Back Cover



BTM reserves the right to make changes to its literature without any prior notice. Visit btmcomp.com for latest version.
©2026 BTM Company, L.L.C. All related logos, product names, icons, designs, products, and services shown herein are among the trademarks owned by BTM Company, L.L.C. Copyrights and trademarks of BTM Company, L.L.C., BTM Europe, BTM Scandinavia AB, or other affiliates are the property of their respective owners. All rights are reserved.

SEALED OFFSET POWER CLAMPS
PC 1500 SO • PC 2500 SO

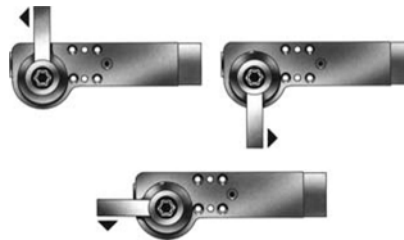


BTM pin drive arms allow fast changeover without disassembly of the sealed internal mechanism.



Left Right Dual

Clamp arms can be mounted left, right or dual without modification.



45° Interchangeable Arm Positions.

FEATURES

- One Piece body ~ Integral Cylinder with Heavy Wall
- Sealed Mechanism ~ Lubricated for Life of Clamp
- Arm Driven by Toggle Linkage
- Hardcoated Aircraft Aluminum Body
- Pin Arm Drive for Simplified Arm Change & Positioning
- Optional Pre-fitted Proximity Switches
- Light Weight

PC 1500 SO
 BTM No. 700100A

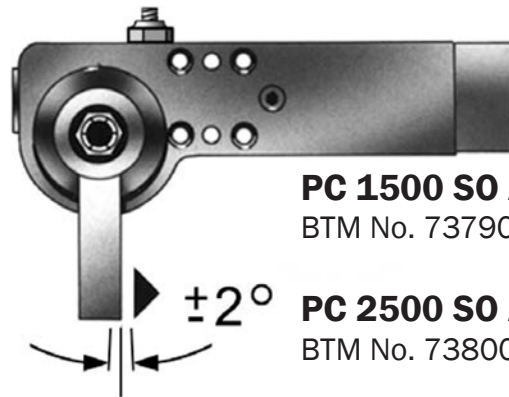
PC 2500 SO
 BTM No. 700200A

AAP Option

ADJUSTABLE ARM POSITIONING

- This feature allows precise $\pm 2^\circ$ adjustment of the arm's closed position.
- The set position will repeat accurately.
- The arm can be mounted in any one of eight positions on either right or left side.

Adjustment Screw



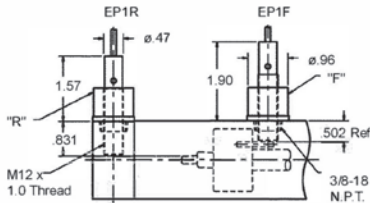
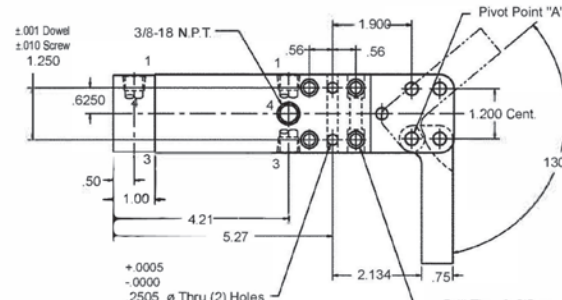
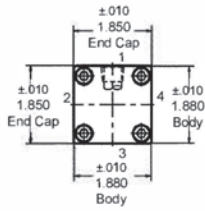
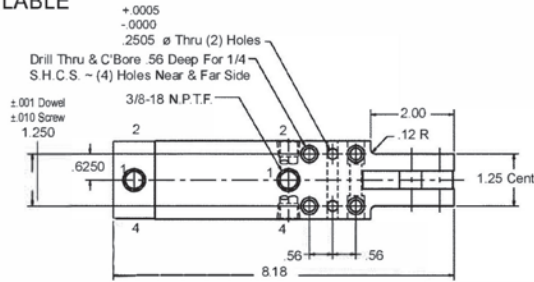
PC 1500 SO AAP
 BTM No. 737900A

PC 2500 SO AAP
 BTM No. 738000A

Repeatable Arm Position
 With Adjustment Of $\pm 2^\circ$

1500 SERIES POWER TOGGLE CLAMP PC 1500-V 130

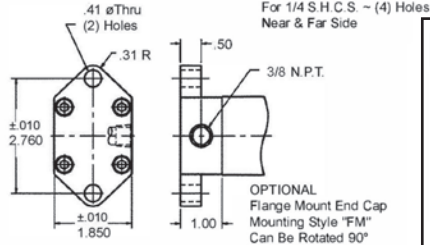
CAD TEMPLATES AVAILABLE



Dimensions For Optional Electrical Proximity Switches

"R" = Rear Switch AC No. 003178 DC No. 003241
"F" = Front Switch AC No. 003172 DC No. 003237

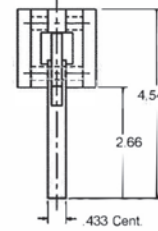
OPTIONAL PROXIMITY SWITCHES (SEE PG. 15)



OPTIONAL Flange Mount End Cap Mounting Style "FM" Can Be Rotated 90°



PC1500 & PC 2500 SERIES



FEATURES

- One Piece Body
- Arm Driven by Toggle Linkage
- Light Weight

SPECIFICATIONS

Bore ϕ : 1.5"
Stroke: 1.699"
Arm Opening: 130°
Recommended operating pressure: 80 - 100 PSI
Use Flow controls to reduce impact
Approx. Weight: 3 lbs.

$$\text{CLAMP FORCE (lbs)} = \frac{4 \times \text{LINE PRESSURE (P.S.I.)} \times \text{LENGTH FROM POINT "A" TO CENTER LINE OF CLAMPING CONTACT AREA ON ARM (INCHES)}}{1}$$

HOW TO ORDER

POWER CLAMP
1500 SERIES: 1.5" BORE
ARM OPENING: VERTICAL 130°
MOUNTING STYLE: FM FLANGE MOUNT
FRONT PORT POSITION: FP1, FP2, FP3, FP4
REAR PORT POSITION: RP1, RP2, RP3, RP4
FRONT PROX. POSITION: EP1F, EP2F, EP3F, EP4F
REAR PROX. POSITION: EP1R, EP2R, EP3R, EP4R
SWITCH TYPE: AC OR DC

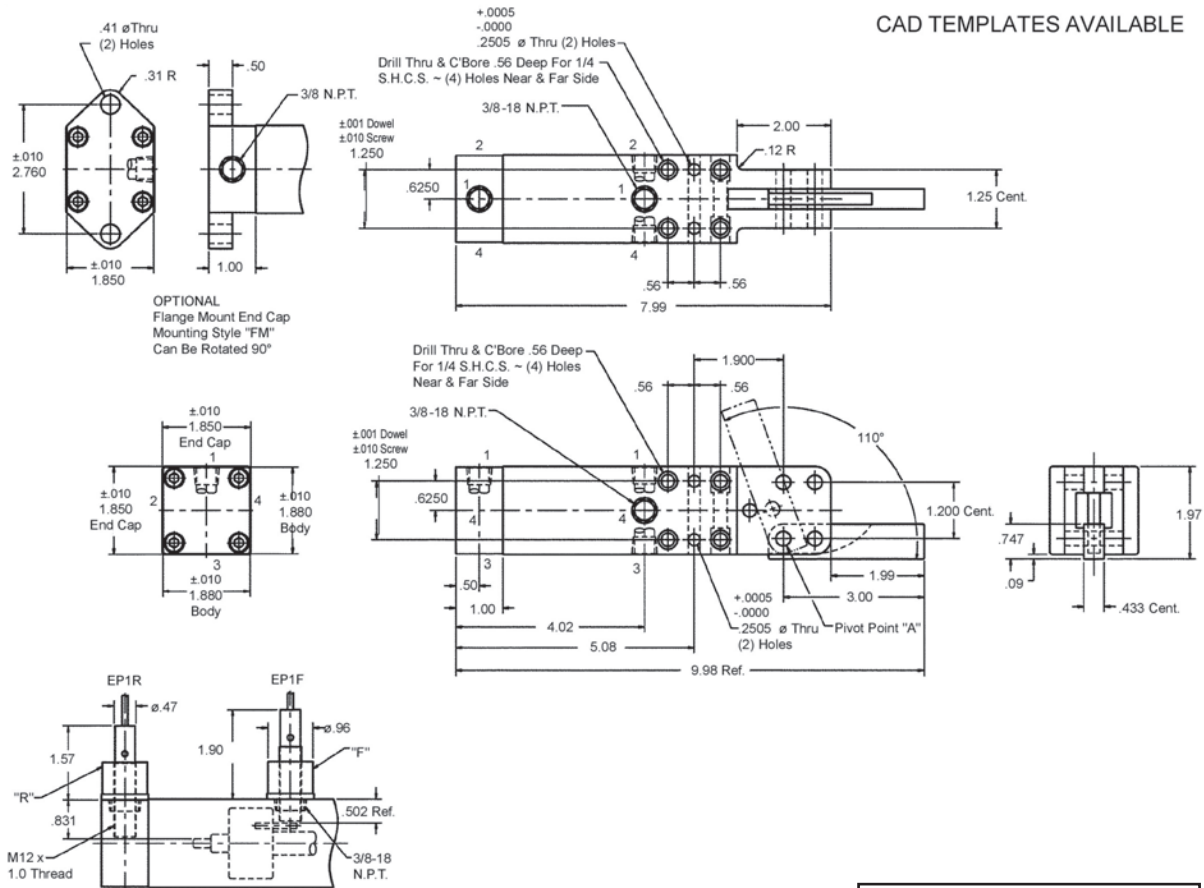
BTM PC-1500-V130 - FM -FP4 -RP1 -EP2F -EP3R -AC

Body Mount No. 001635
Flange Mount No. 012503

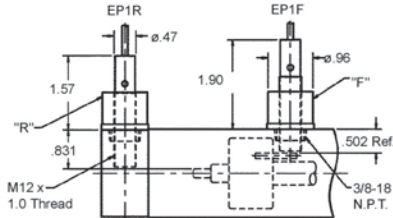
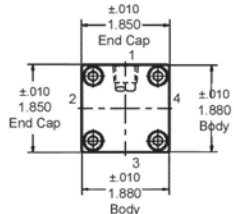
OPTIONS

1500 SERIES POWER TOGGLE CLAMP PC 1500-H 110

CAD TEMPLATES AVAILABLE



OPTIONAL Flange Mount End Cap Mounting Style "FM" Can Be Rotated 90°



Dimensions For Optional Electrical Proximity Switches

"R" = Rear Switch AC: No. 003176 DC: No. 003241
"F" = Front Switch AC: No. 003172 DC: No. 003237

OPTIONAL PROXIMITY SWITCHES (SEE PG. 15)

$$\text{CLAMP FORCE (lbs)} = \frac{4 \times \text{LINE PRESSURE (P.S.I.)} \times \text{LENGTH FROM POINT "A" TO CENTER LINE OF CLAMPING CONTACT AREA ON ARM (INCHES)}}{1}$$

SPECIFICATIONS

Bore ø: 1.5"
Stroke: 1.509"
Arm Opening: 110°
Recommended operating pressure: 80 - 100 PSI
Use Flow controls to reduce impact
Approx. Weight: 3 lbs.

HOW TO ORDER

POWER CLAMP
1500 SERIES: 1.5" BORE
ARM OPENING: HORIZONTAL 110°
MOUNTING STYLE: FM FLANGE MOUNT
FRONT PORT POSITION: FP1, FP2, FP3, FP4
REAR PORT POSITION: RP1, RP2, RP3, RP4
FRONT PROX. POSITION: EP1F, EP2F, EP3F, EP4F
REAR PROX. POSITION: EP1R, EP2R, EP3R, EP4R
SWITCH TYPE: AC OR DC

BTM PC-1500-H110 - FM -FP4 -RP1 -EP2F -EP3R -AC

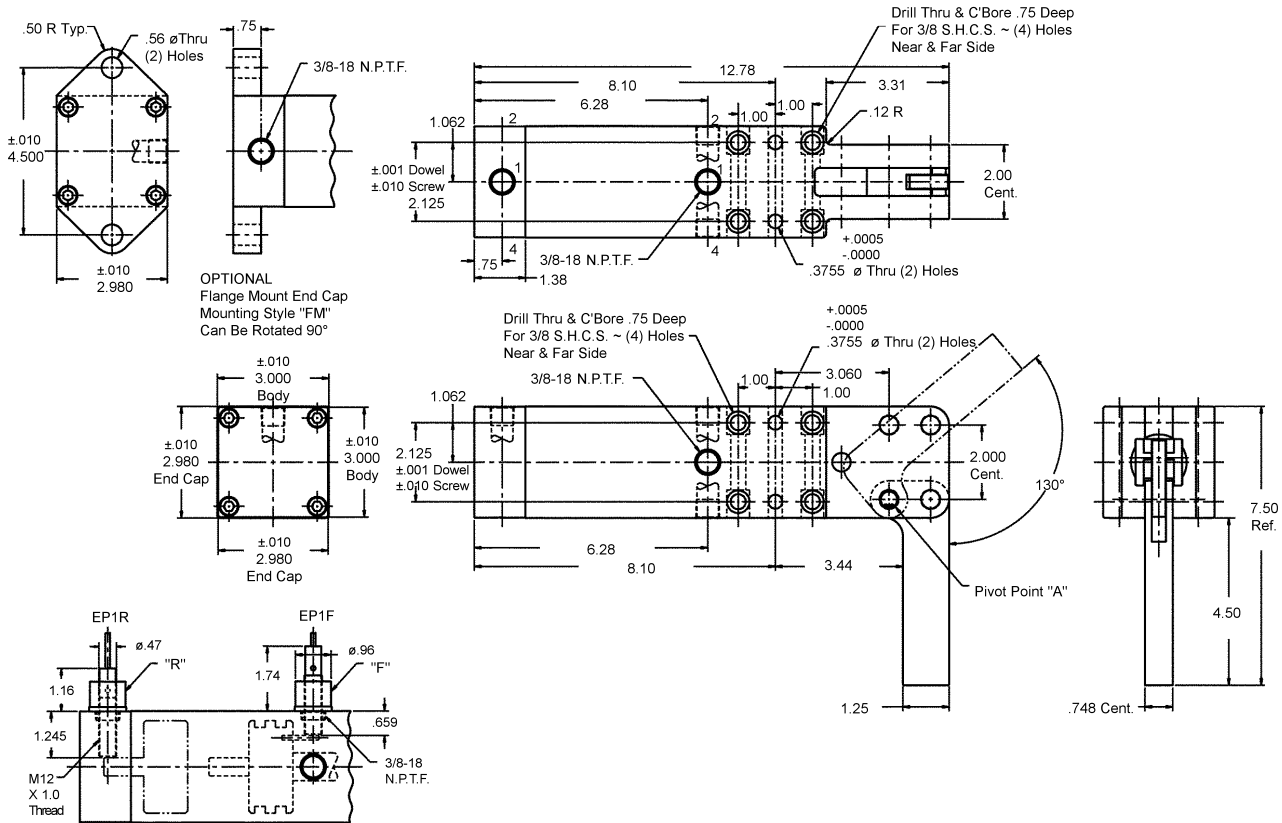
Body Mount No. 001666

OPTIONS

Flange Mount No. 012505

2500 SERIES POWER TOGGLE CLAMP PC 2500-V 130

CAD TEMPLATES AVAILABLE



Dimensions For Optional Electrical Proximity Switches

"R" = Rear Switch "F" = Front Switch
 AC: No. 003250 AC: No. 003246
 DC: No. 003259 DC: No. 003255

OPTIONAL PROXIMITY SWITCHES (SEE PG. 15)

SPECIFICATIONS

Bore ϕ : 2.5"
 Stroke: 2.83"
 Arm Opening: 130°
 Recommended operating pressure: 80 - 100 PSI
 Use Flow controls to reduce impact
 Approx. Weight: 11 lbs.

$$\text{CLAMP FORCE (lbs)} = \frac{15 \times \text{LINE PRESSURE (P.S.I.)}}{\text{LENGTH FROM POINT "A" TO CENTER LINE OF CLAMPING CONTACT AREA ON ARM (INCHES)}}$$

HOW TO ORDER

POWER CLAMP
 2500 SERIES: 2.5" BORE
 ARM OPENING: VERTICAL 130°
 MOUNTING STYLE: FM FLANGE MOUNT
 FRONT PORT POSITION: FP1, FP2, FP3, FP4
 REAR PORT POSITION: RP1, RP2, RP3, RP4
 FRONT PROX. POSITION: EP1F, EP2F, EP3F, EP4F
 REAR PROX. POSITION: EP1R, EP2R, EP3R, EP4R
 SWITCH TYPE: AC OR DC

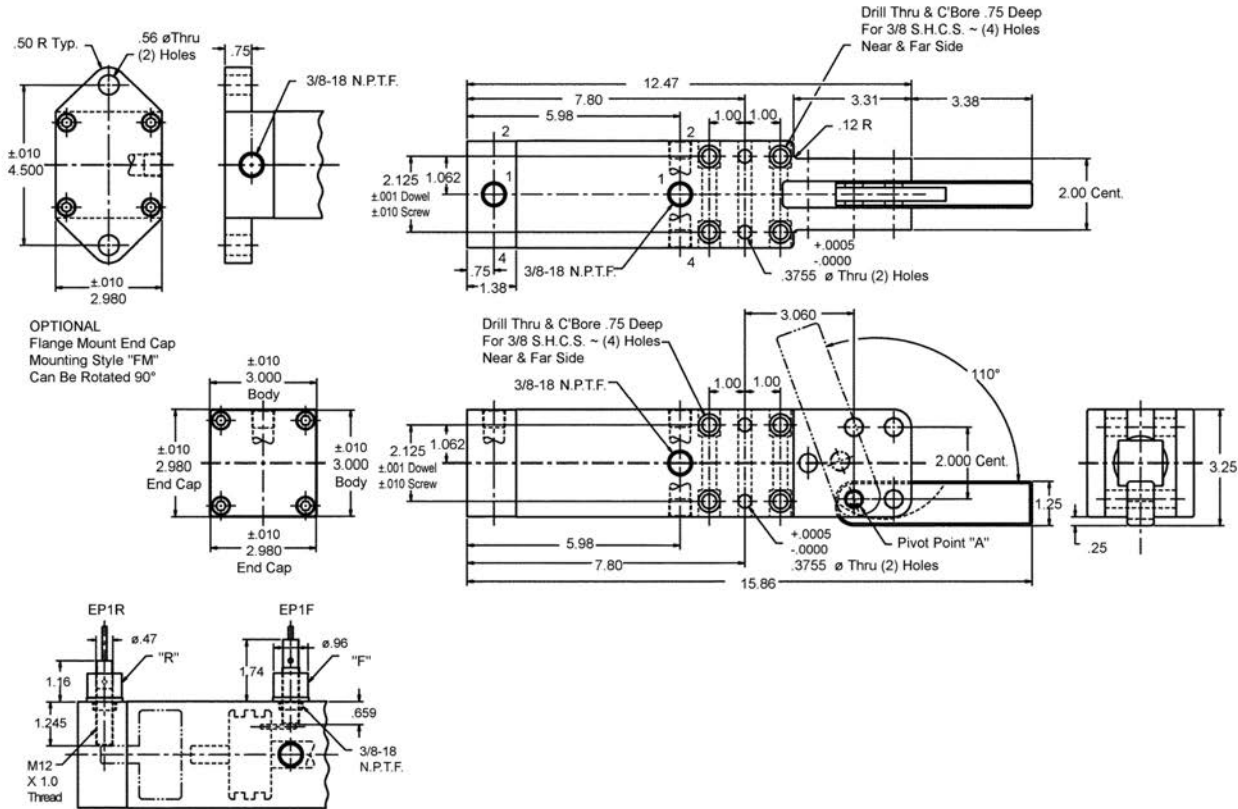
BTM PC-2500-V130 - FM -FP4 -RP1 -EP2F -EP3R -AC

Body Mount No. 001411
 Flange Mount No. 012512

OPTIONS

2500 SERIES POWER TOGGLE CLAMP PC 2500-H 110

CAD TEMPLATES AVAILABLE



Dimensions For Optional Electrical Proximity Switches
 "R" = Rear Switch AC: No. 003250 DC: No. 003259
 "F" = Front Switch AC: No. 003246 DC: No. 003255

OPTIONAL PROXIMITY SWITCHES (See Pg. 15)

$$\text{CLAMP FORCE (lbs)} = \frac{15 \times \text{LINE PRESSURE (P.S.I.)}}{\text{LENGTH FROM POINT "A" TO CENTER LINE OF CLAMPING CONTACT AREA ON ARM (INCHES)}}$$

SPECIFICATIONS
 Bore ø: 2.5"
 Stroke: 2.522"
 Arm Opening: 110°
 Recommended operating pressure: 80 - 100 PSI
 Use Flow controls to reduce impact
 Approx. Weight: 11 lbs.

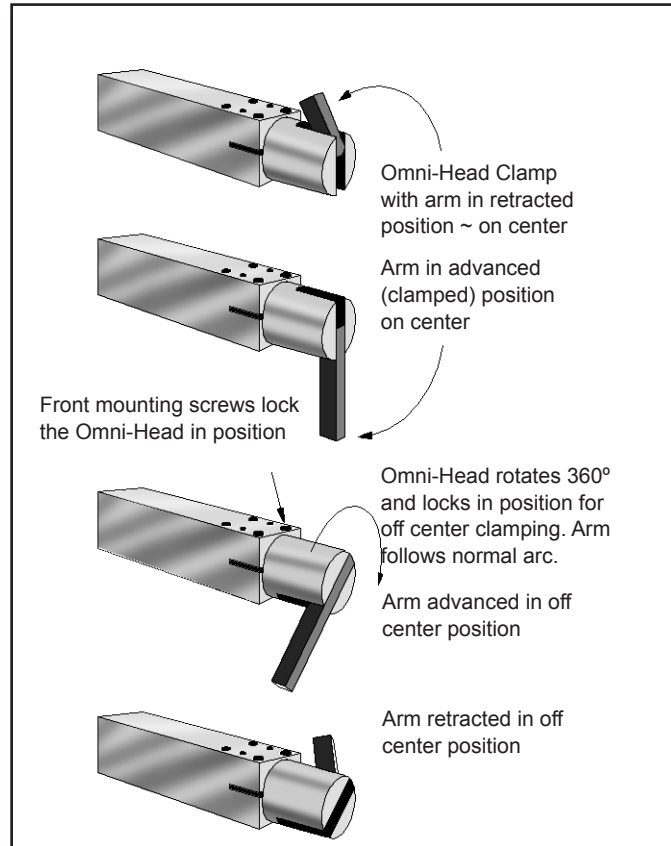
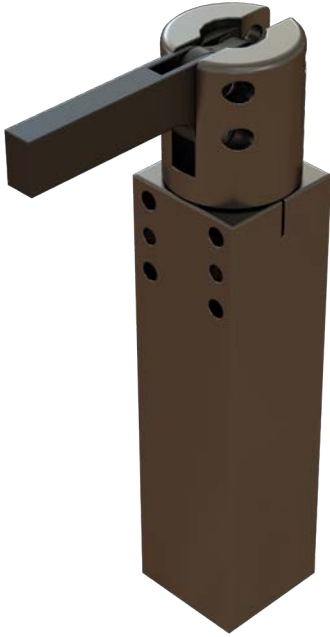
HOW TO ORDER

POWER CLAMP
 2500 SERIES: 2.5" BORE
 ARM OPENING: HORIZONTAL 110°
 MOUNTING STYLE: FM FLANGE MOUNT
 FRONT PORT POSITION: FP1, FP2, FP3, FP4
 REAR PORT POSITION: RP1, RP2, RP3, RP4
 FRONT PROX. POSITION: EP1F, EP2F, EP3F, EP4F
 REAR PROX. POSITION: EP1R, EP2R, EP3R, EP4R
 SWITCH TYPE: AC OR DC

BTM PC-2500-H110 - FM -FP4 -RP1 -EP2F -EP3R -AC

Body Mount No. 001444
 Flange Mount No. 012514

OPTIONS

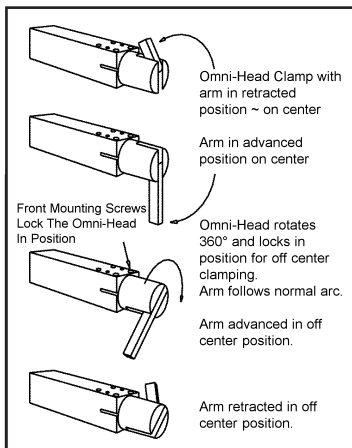
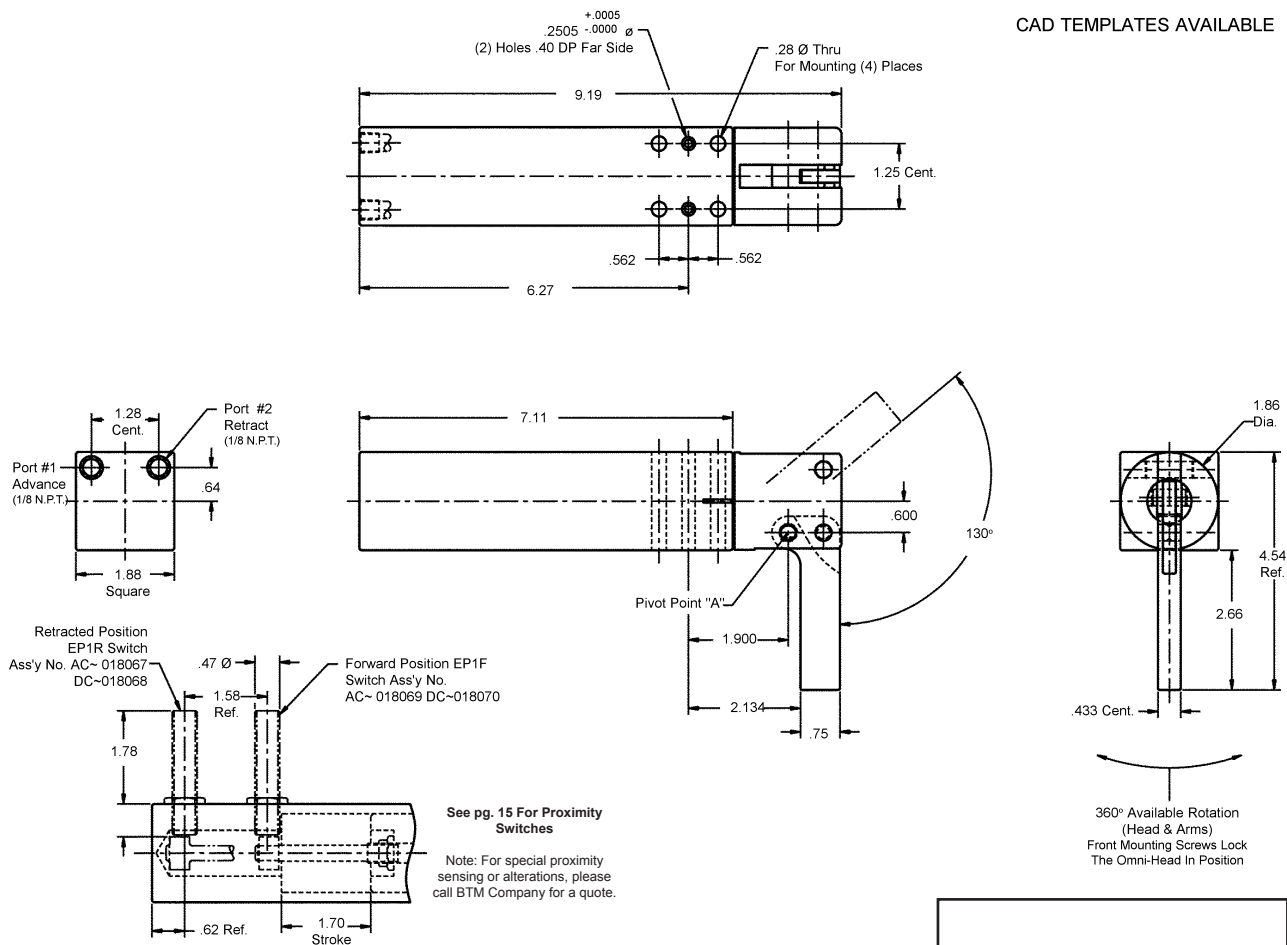
**OMNI-HEAD POWER TOGGLE CLAMPS
PCO 1500 SERIES****FEATURES**

- Gripper Head Rotates 360° & Locks in Position for Off Center Gripping
- Hardcoated Aircraft Aluminum Body
- Optional Pre-Fitted Proximity Switches
- Arm Driven by Toggle Linkage
- Light Weight

For Standard 25.4 mm [1.00 in] Bore Light Duty PCO-100 Series Omni Clamps, see 100 Series Clamps & Grippers catalog.

1500 SERIES OMNI CLAMP PCO-1500-V 130

CAD TEMPLATES AVAILABLE



$$\text{CLAMP FORCE (lbs)} = \frac{4 \times \text{LINE PRESSURE (P.S.I.)}}{\text{LENGTH FROM POINT "A" TO CENTER LINE OF GRIPPING CONTACT AREA ON GRIPPER ARM (INCHES)}}$$

SPECIFICATIONS

Bore \varnothing : 1.50"
 Stroke: 1.70"
 Arm Opening: 130°
 Recommended operating pressure 80 - 100 PSI
 Use Flow controls to reduce impact
 Approx. Weight: 3 lbs.

HOW TO ORDER

POWER CLAMP OMNI (PCO)
 1500 SERIES: 1.50 BORE
 ARM OPENING: VERTICAL 130°
 FRONT ELECTRICAL PROXIMITY POSITION: EP2F, EP4F
 SWITCH TYPE: DC ONLY
 REAR ELECTRICAL PROXIMITY POSITION: EP5R
 SWITCH TYPE: AC OR DC

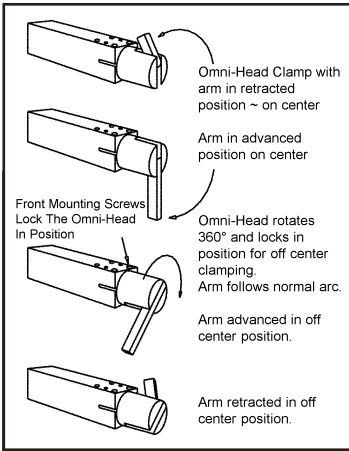
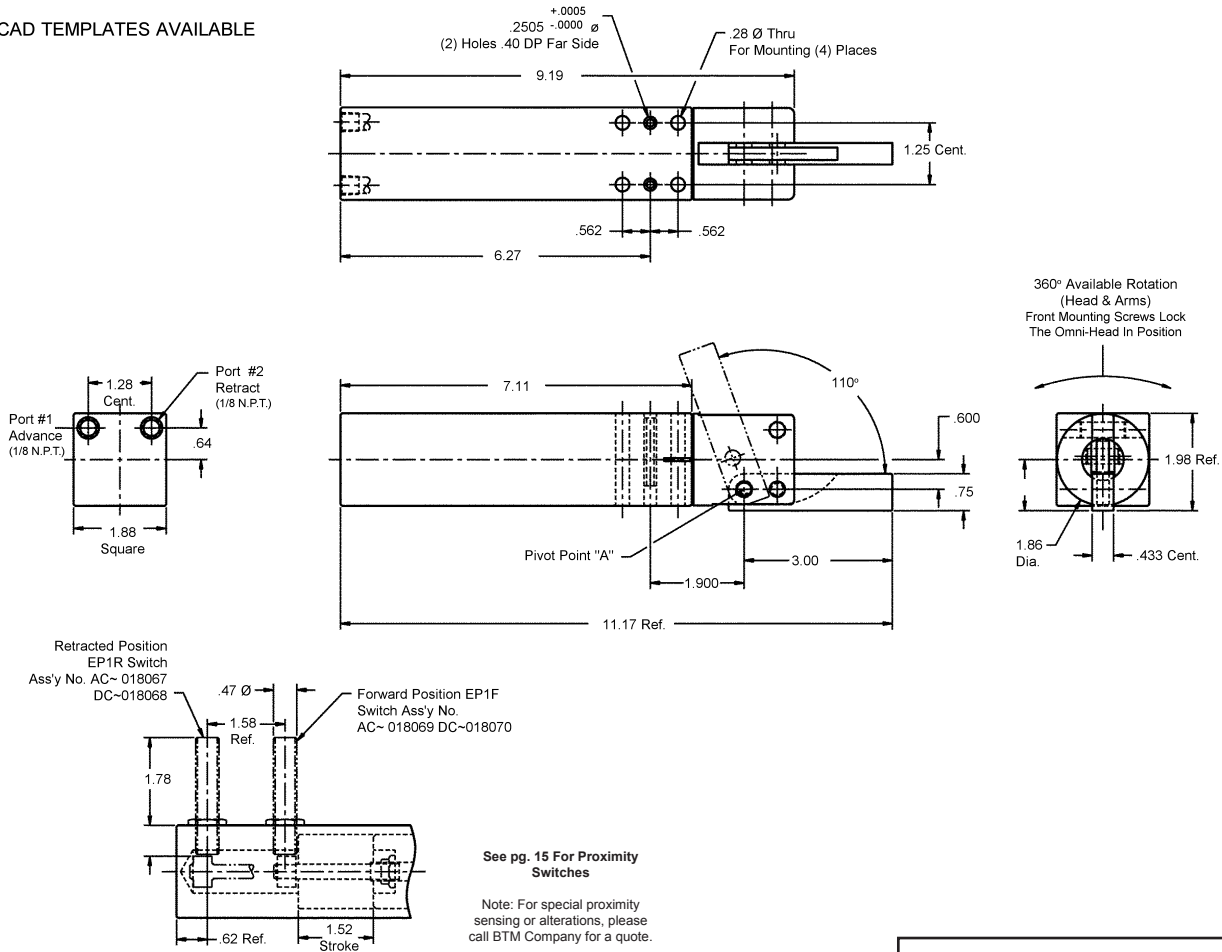
BTM PCO-1500-V130 - EP2F-DC-EP5R-AC

BTM No. 003404

OPTIONS

1500 SERIES OMNI CLAMP PCO-1500-H 110

CAD TEMPLATES AVAILABLE



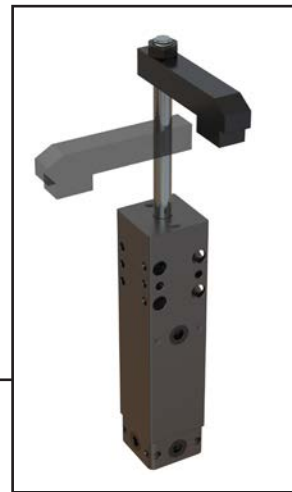
$$\text{CLAMP FORCE (lbs)} = \frac{4 \times \text{LINE PRESSURE (P.S.I.)}}{\text{LENGTH FROM POINT "A" TO CENTER LINE OF GRIPPING CONTACT AREA ON GRIPPER ARM (INCHES)}}$$

SPECIFICATIONS
 Bore ø: 1.50"
 Stroke: 1.52"
 Arm Opening: 110°
 Recommended operating pressure: 80 - 100 PSI
 Use Flow controls to reduce impact
 Approx. Weight: 3 lbs.

HOW TO ORDER

POWER CLAMP OMNI (PCO)
 1500 SERIES: 1.50 BORE
 ARM OPENING: HORIZONTAL 110°
 FRONT ELECTRIC PROXIMITY POSITION: EP2F, EP4F
 SWITCH TYPE: DC ONLY
 REAR ELECTRICAL PROXIMITY POSITION: EP5R
 SWITCH TYPE: AC OR DC

BTM PCO-1500-H110 - EP2F-DC-EP5R-AC
 BTM No. 017548 OPTIONS

**ROTARY - LINEAR POWER CLAMP
RC 1500 SERIES**

90° Rotation with linear travel at both ends of the stroke. May be used in push or pull direction. Arm not included.

FEATURES

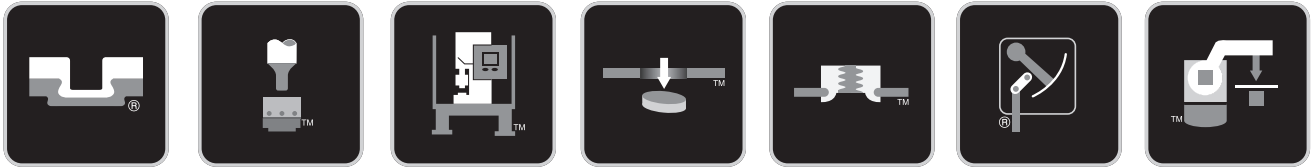
- 90° Clockwise or Counterclockwise Rotation
- Linear Travel at Both Ends of Stroke
- Harmonic Motion
- Sealed Mechanism
- Hardcoated Aircraft Aluminum Body
- Optional Pre-Fitted Proximity Switches
- Light Weight

ACCESSORIES

Proximity Switches for 1500 & 2500 Series Clamps										
SERIES	EP1R	EP2R	EP3R	EP4R	EP5R	EP1F	EP2F	EP3F	EP4F	SPECIFICATIONS
50	070310	070310	070310	070310	070310	070310	070310	070310	070310	AC ~ Normally Open (12mm) Supply Voltage: 20-250 VAC Load Current Max.: 5-30mA Supplied w/ 3 meter - 2 wire cable.
63	070310	070310	070310	070310	070310	070310	070310	070310	070310	
1500	003176	003176	003176	003176	003176	003176	003176	003176	003176	
2500	003250	003250	003250	003250	003250	003250	003250	003250	003250	
1500 Omni	018067	N/A	N/A	N/A	018067	018067	N/A	N/A	N/A	
15-90	003176	003176	003176	003176	003176	003176	003176	003176	003176	
25-90	003250	003250	003250	003250	003250	003250	003250	003250	003250	
PPL	070310	070310	070310	070310	070310	070310	070310	070310	070310	
50	006463	006463	006463	006463	006463*	006463	006463	006463	006463	DC ~ Normally Open (12mm) Sourcing or Sinking Supply Voltage: 10-55 VDC Load Current Max.: 5-200mA Supplied w/ 3 meter - 2 wire cable.
63	006463	006463	006463	006463	006463	006463	006463	006463	006463	
1500	003241	003241	003241	003241	003241	003237	003237	003237	003237	
2500	003259	003259	003259	003259	003259	003255	003255	003255	003255	
1500 Omni	018068	NA	NA	NA	NA	018069	N/A	N/A	N/A	
15-90	003241	003241	003241	003241	003241	003237	003237	003237	003237	
25-90	003259	003259	003259	003259	003259	003255	003255	003255	003255	
PPL	006463	006463	006463	006463	006463	006363	006363	006363	006363	

1500 & 2500 Series Clamp Arm Spindles																																														
FLAT or CONE CUSHION SPINDLE ASSEMBLY Thread D 			HEX HEAD SPINDLE ASSEMBLY Thread D 			SWIVEL FOOT SPINDLE ASSEMBLY Thread D 																																								
1500 SERIES Flat ~ 012607 / Cone ~ 012608 <table border="1"> <tr> <th>A</th> <th>B</th> <th>C</th> <th>D</th> </tr> <tr> <td>2.44"</td> <td>.38"</td> <td>.06"</td> <td>1/4-20</td> </tr> <tr> <td>62.0mm</td> <td>9.6mm</td> <td>1.5mm</td> <td></td> </tr> </table>			A	B	C	D	2.44"	.38"	.06"	1/4-20	62.0mm	9.6mm	1.5mm		1500 SERIES 012612 <table border="1"> <tr> <th>A</th> <th>B</th> <th>C</th> <th>D</th> </tr> <tr> <td>2.12"</td> <td>.50"</td> <td>.16"</td> <td>1/4-20</td> </tr> <tr> <td>53.8mm</td> <td>12.7mm</td> <td>4.1mm</td> <td></td> </tr> </table>			A	B	C	D	2.12"	.50"	.16"	1/4-20	53.8mm	12.7mm	4.1mm		1500 SERIES 012615 <table border="1"> <tr> <th>A</th> <th>B</th> <th>C</th> <th>D</th> </tr> <tr> <td>2.25"</td> <td>.50"</td> <td>.36"</td> <td>1/4-20</td> </tr> <tr> <td>57.2mm</td> <td>12.7mm</td> <td>9.6mm</td> <td></td> </tr> </table>			A	B	C	D	2.25"	.50"	.36"	1/4-20	57.2mm	12.7mm	9.6mm		FIELD MOUNTING DIMENSIONS for 1500 & 2500 SPINDLE ASS'YS. 	
A	B	C	D																																											
2.44"	.38"	.06"	1/4-20																																											
62.0mm	9.6mm	1.5mm																																												
A	B	C	D																																											
2.12"	.50"	.16"	1/4-20																																											
53.8mm	12.7mm	4.1mm																																												
A	B	C	D																																											
2.25"	.50"	.36"	1/4-20																																											
57.2mm	12.7mm	9.6mm																																												
2500 SERIES Flat ~ 012609 / Cone ~ 012610 <table border="1"> <tr> <th>A</th> <th>B</th> <th>C</th> <th>D</th> </tr> <tr> <td>3.50"</td> <td>.56"</td> <td>.06"</td> <td>3/8-16</td> </tr> <tr> <td>88.9mm</td> <td>14.2mm</td> <td>1.5mm</td> <td></td> </tr> </table>			A	B	C	D	3.50"	.56"	.06"	3/8-16	88.9mm	14.2mm	1.5mm		2500 SERIES 012613 <table border="1"> <tr> <th>A</th> <th>B</th> <th>C</th> <th>D</th> </tr> <tr> <td>3.75"</td> <td>.62"</td> <td>.25"</td> <td>3/8-16</td> </tr> <tr> <td>95.2mm</td> <td>15.7mm</td> <td>6.4mm</td> <td></td> </tr> </table>			A	B	C	D	3.75"	.62"	.25"	3/8-16	95.2mm	15.7mm	6.4mm		2500 SERIES 012616 <table border="1"> <tr> <th>A</th> <th>B</th> <th>C</th> <th>D</th> </tr> <tr> <td>3.50"</td> <td>.62"</td> <td>.50"</td> <td>3/8-16</td> </tr> <tr> <td>88.9mm</td> <td>15.7mm</td> <td>12.7mm</td> <td></td> </tr> </table>			A	B	C	D	3.50"	.62"	.50"	3/8-16	88.9mm	15.7mm	12.7mm		Determined by customer. Verify spindle clearance in back position. Clamp Arm Top View Diameter Thru ~ B	
A	B	C	D																																											
3.50"	.56"	.06"	3/8-16																																											
88.9mm	14.2mm	1.5mm																																												
A	B	C	D																																											
3.75"	.62"	.25"	3/8-16																																											
95.2mm	15.7mm	6.4mm																																												
A	B	C	D																																											
3.50"	.62"	.50"	3/8-16																																											
88.9mm	15.7mm	12.7mm																																												
						<table border="1"> <tr> <th></th> <th>A</th> <th>B</th> </tr> <tr> <td>1500 SERIES</td> <td>.22" 5.6mm</td> <td>.28" 7.1mm</td> </tr> <tr> <td>2500 SERIES</td> <td>.38" 9.6mm</td> <td>.41" 10.4mm</td> </tr> </table>			A	B	1500 SERIES	.22" 5.6mm	.28" 7.1mm	2500 SERIES	.38" 9.6mm	.41" 10.4mm																														
	A	B																																												
1500 SERIES	.22" 5.6mm	.28" 7.1mm																																												
2500 SERIES	.38" 9.6mm	.41" 10.4mm																																												

CONTACT YOUR LOCAL BTM SALES TEAM FOR SUPPORT



Clinching | Clinch Tooling | Clenching, Piercing & Fastener Equipment | Presses & Press Units | Work Holding

LOCAL Customer Relationships & Project Support		
LOCAL Application Expertise Supported By Globally Shared Expertise	LOCAL Engineering & Manufacturing For Project Specific Content	LOCAL After-Sales Support Leveraged For Global Coverage
GLOBAL Shared Research & Technology Development		
GLOBAL Manufacturing For Scale Optimized Content		



BTM[®]
COMPANY
USA | CANADA
Global Headquarters
btmcomp.com
sales@btmcomp.com
+1.810.364.4567

BTM[®]
EUROPE
btm-europe.de
info@btm-europe.de
Head Office: +49 2943 9790-0
Branch Office: +49 7841 68136-0

BTM[®]
KOREA
btmkorea.com
betem@btmkorea.com
+82 31 477 4202

BTM[®]
MEXICO
btmcomp.com
salesmx@btmcomp.com
+52 442 341 5601

BTM[®]
SCANDINAVIA
btmscand.se
btm@btmscand.se
+46 480-868 75

BTM[®]
SOUTH AMERICA
gptech.ind.br
contato@gptech.ind.br
+5547 3425 8716

BTM[®]
UNITED KINGDOM
btm-europe.de
info@btm-europe.de
+49 2943 9790-0

HR Hawker
Richardson
AUSTRALASIA
hawkerrichardson.com.au
web@hrltd.com.au
+61 1300 36 00 31

dkPOWER[®]
TURKEY
dkpower.com
dk@dk-power.com
+90 224 482 40 40

HERON[®]
CHINA
heronwelder.com
bill@heronwelder.com
+86 136 02866179

TECNOPRESS[®]
MEXICO
technopress.com.mx
+52 55 53632758

FOR REST OF WORLD, CONTACT BTM COMPANY