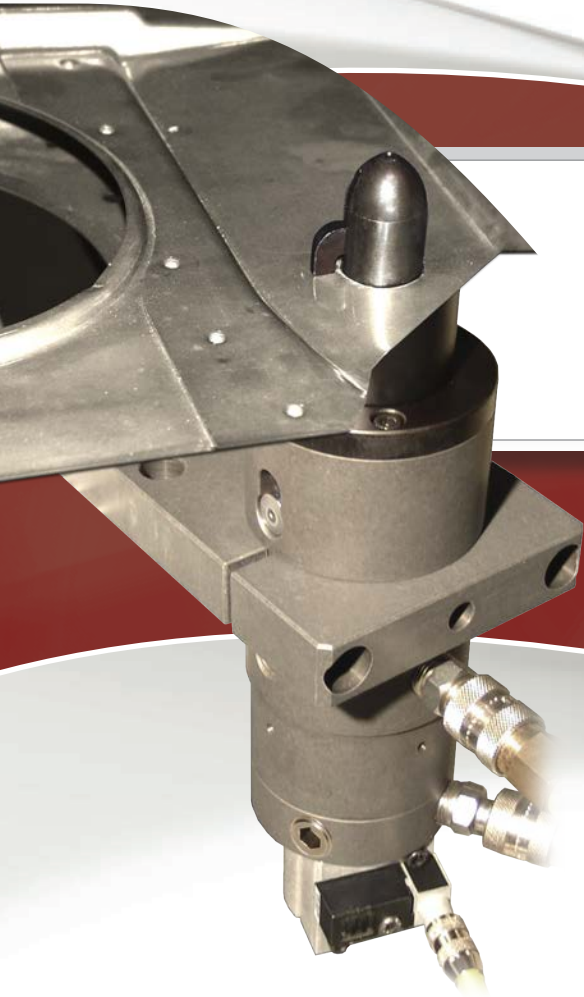


# Pin & Hook Clamps

*Reduce Cost by Clamping Through Holes or Along Edges*



**PLC25**

**PLC45**

**PLC63**

**RLPC63**

**LPLC-38**

**Pin Clamps locate and clamp through holes or slots.**

**Hook Clamps offer reduced cost, simple clamping through holes, slots, or along edges.**

**BTM<sup>®</sup>**



## SAFETY NOTE

Customer is responsible for the safe operation and use of the products shown in this literature.

## INTRODUCTION

BTM Pin Clamps reduce cost by both accurately locating through datum holes and clamping a part with one device. XYZ location register is achieved by incorporating a clamping finger or hook inside the locator pin thereby eliminating expensive swing arm power clamps.

The less expensive Hook Clamps are used when accurate part location is not required.

BTM Hook Clamps provide simple clamping through holes, slots or along edges further reducing cost. Hooked style fingers clamp over flanged holes.

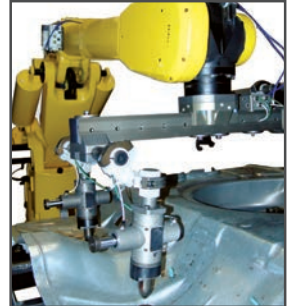
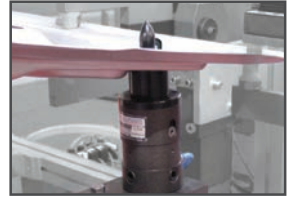
### Pin & Hook Clamps Types: Clamping, Retaining, Locking

**Clamping** – PLC and SFC – Air pressure on a piston multiplies the force required to clamp the part to the net surface.

**Retaining** – RLPC and RLFPC – Air pressure applies both clamping force and retracts a spring loaded rod locker, which upon loss of air engages the finger/hook to retain the clamped part. This light weight and compact clamp is best for material handling and robotic end-of-arm tool (EOAT).

**Locking** – LPLC and LSFC – A patented air driven cam mechanism maintains clamp force upon removal of air making this clamp ideal for moving fixtures. Clamp force is available within the last 3mm of finger/hook travel making this clamp ideal for clamping multiple part thicknesses.

All BTM Pin and Hook clamps feature 90° positioning of the finger/hook to avoid part obstructions or weld spatter. Round body clamps feature full 360° positioning of the finger/hook.



## HOW THEY WORK

### PIN CLAMPS (PLC, RLPC, LPLC)



#### STEP ONE

With the clamp finger retracted, the part is loaded over the locating pin.



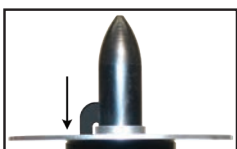
#### STEP TWO

The material rests on the clamp Rest Block ("Donut").



#### STEP THREE

The finger swings out of the locating pin with 5mm [0.20"] of rotational travel.



#### STEP FOUR

The finger has 10mm [0.39"] of straight travel. LPLCs clamp and lock in the last 3mm.

### HOOK CLAMPS (SFC, RLFSC, LFSC)

#### STEP ONE

The part is loaded over the retracted finger and rests on the clamp rest block "donut".



#### STEP TWO

The finger swings in the direction of its clamping surface with 5mm [0.20"] of rotational travel.



#### STEP THREE

The finger has 10mm [0.39"] of straight travel. LSFCS clamp and lock in the last 3mm [0.12"].



BTM reserves the right to make changes to its literature without any prior notice. Visit [btmcomp.com](http://btmcomp.com) for latest version. ©2026 BTM Company, L.L.C. All related logos, product names, icons, designs, products, and services shown herein are among the trademarks owned by BTM Company, L.L.C. Copyrights and trademarks of BTM Company, L.L.C., BTM Europe, BTM Scandinavia AB, or other affiliates are the property of their respective owners. All rights are reserved.

## TABLE OF CONTENTS

**NON-LOCKING MODELS**



**PLC25 Light Duty Pin Locating Clamp** ..... **4-5**

Hole/Slot Range	6mm-12.00mm
Clamping Force	222N @ 5.5BAR [50lbf @ 80PSI]

**Features**

- Compact & Light Weight
- 25mm Bore Pneumatic Cylinder
- Magnetic Position Sensing Switch Option



**PLC45 Pin Locating Clamp** ..... **6-7**

Hole/Slot Range	12.80mm-18.00mm
Clamping Force	578N @ 5.5BAR [130lbf @ 80PSI]

**Features**

- Clamps on Top of a Flange
- Additional Sizes are Available as a Special Assembly



**PLC63 Pin Locating Clamp** ..... **8-9**

Hole/Slot Range	19.80mm-40.00mm
Clamping Force	1334N @ 5.5BAR [300lbf @ 80PSI]

**Features**

- Finger Relief for Flanged Hole Clearance
- Additional Sizes are Available as a Special Assembly



**SFC63 Hook Clamp** ..... **10-11**

Hole/Slot Range	18.00mm-40.00mm
Clamping Force	1334N @ 5.5BAR [300lbf @ 80PSI]

**Features**

- Single Clamp Finger Without a Locating Pin
- Additional Sizes are Available as a Special Assembly

**LOCKING MODELS**



**RLPC45 & 63 Rod-Locking Pin Locator Clamps** ..... **12-13**

	RLPC45	RLPC63
Hole/Slot Range	12.50mm-18.00mm	18.00mm-40.00mm
Clamping Force	578N @ 5.5BAR [130lbf @ 80PSI]	1334N @ 5.5BAR [300lbf @ 80PSI]

**Features**

- Retains the Part when Air Pressure is Removed or Lost
- Finger Relief for Flanged Hole Clearance
- Additional Sizes are Available as a Special Assembly



**RLSFC63 Rod-Locking Hook Clamp** ..... **14-15**

Hole/Slot Range	23.00mm-40.00mm
Clamping Force	1334N @ 5.5BAR [300lbf @ 80PSI]

**Features**

- Retains the Part when Air Pressure is Removed or Lost
- Single Clamp Finger Without a Locating Pin
- Additional Sizes are Available as a Special Assembly



**LPLC38 Locking Pin Locator Clamp** ..... **16-17**

Hole/Slot Range	19.80mm-40.00mm
Clamping Force	890 - 1334N @ 5.5BAR [200 - 300lbf @ 80PSI]

**Features**

- Maintains Clamping Force when Locked, Even if Air Pressure is Removed or Lost
- Finger Relief for Flanged Hole Clearance
- Additional Sizes are Available as a Special Assembly



**LSFC38 Locking Hook Clamp** ..... **18-19**

Hole/Slot Range	18.00mm-40.00mm
Clamping Force	890 - 1334N @ 5.5BAR [200 - 300lbf @ 80PSI]

**Features**

- Maintains Clamping Force when Locked, Even if Air Pressure is Removed or Lost
- Single Clamp Finger Without a Locating Pin
- Additional Sizes are Available as a Special Assembly



**LPLC38M Manual Locking Pin Clamps** ..... **20-21**

Hole/Slot Range	24.80mm-40.00mm
Clamping Force	1112N [250lbf]

**Features**

- Maintains Clamping Force when Locked
- Finger Relief for Flanged Hole Clearance
- Additional Sizes are Available as a Special Assembly

**Mounting Information** ..... **22**

**Switch Information** ..... **23**

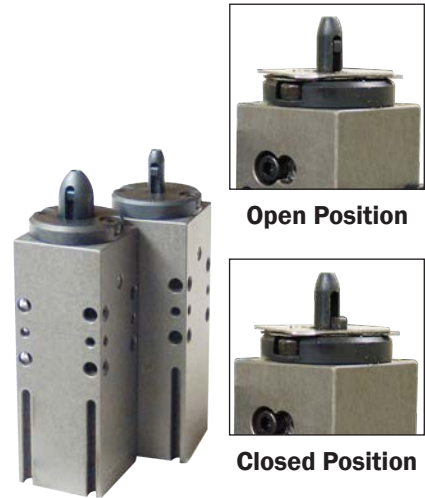
**Warranty Information** ..... **24**

**Global Sales Support Team** ..... **Back Cover**

## PLC25 LIGHT DUTY PIN CLAMP

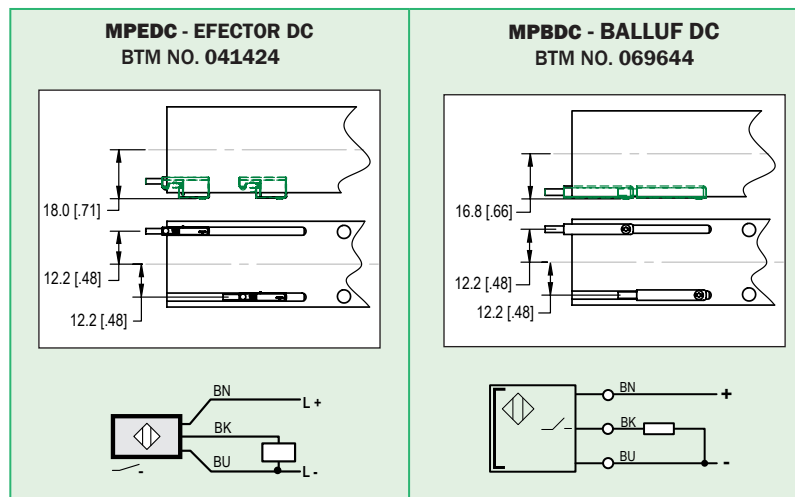
A non-locking light duty pin locator clamp designed to clamp through small holes or slots.

<b>Hole/Slot Size</b>	6mm - 12mm
<b>Clamping Force</b>	222N @ 5.5BAR [50lbf @ 80PSI]
<b>Finger Travel</b>	6mm [0.24"] Total Consists of: <ul style="list-style-type: none"> <li>• 3mm [0.12in] rotational</li> <li>• 3mm [0.12in] straight line pull down stroke</li> </ul>
<b>Bore Diameter</b>	25.4mm [1.00in]
<b>Cylinder Stroke</b>	7.0mm [0.28in]
<b>Recommended Operating Pressure</b>	4.0 - 6.9 BAR [60 - 100 PSI]
<b>Approximate Weight</b>	0.28 kg [0.62 lbs] (depending on pin size)

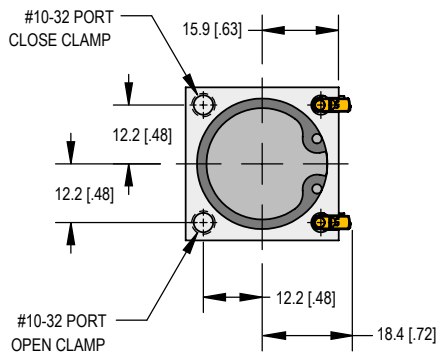
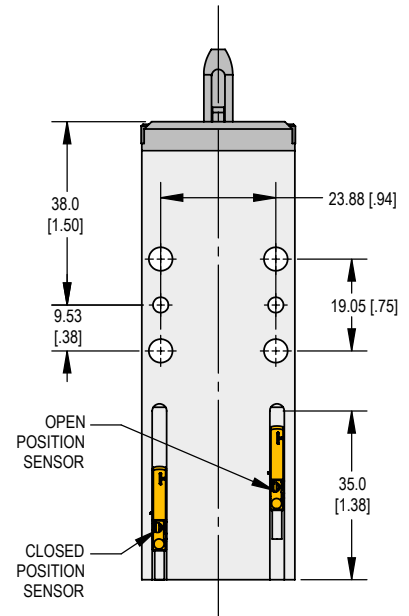
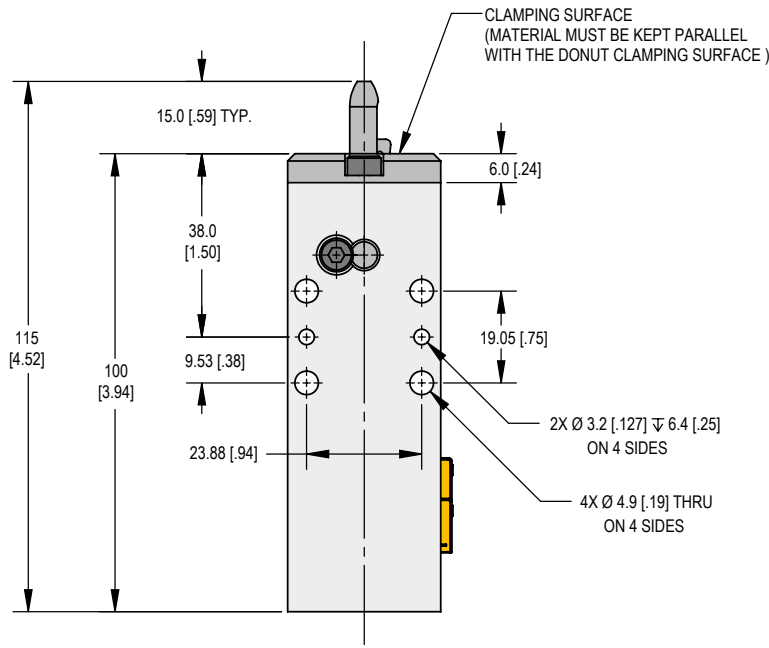
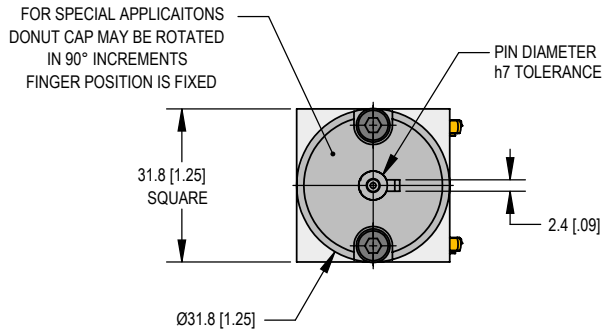


### HOW TO ORDER To request a quote or place an order, please refer to BTM Global Operations Sales Support on the last page of this catalog.

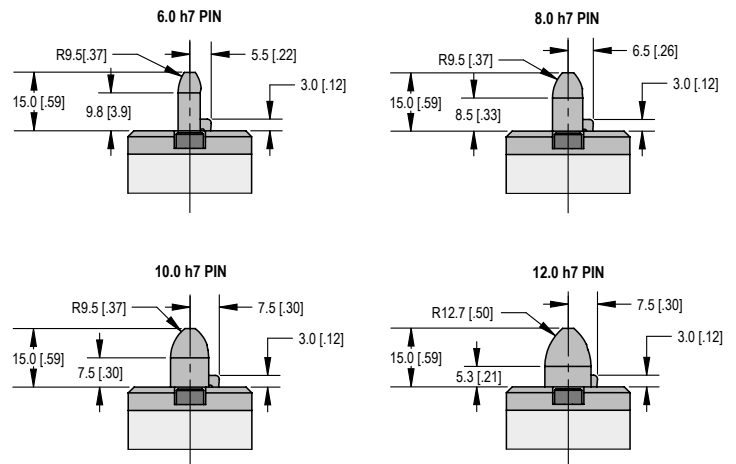
<b>CLAMP SELECTION</b>	<b>PIN SELECTION</b>	<b>SENSING</b>	<b>ASSEMBLY NUMBER</b>										
<b>PLC25</b>	<b>6.00</b>	<b>MPEDC</b>	<b>PD226300A</b>										
<b>CLAMP SERIES</b>	<b>PIN DIAMETER</b>	<b>SENSING OPTION</b>	<b>INCLUDE BTM STANDARD OR SPECIAL ASSEMBLY NUMBER</b>										
	<b>6.00mm</b> <b>8.00mm</b> <b>10.00mm</b> <b>12.00mm</b> See p. 5	<b>MPEDC =</b> Efector DC Magnetic Position Sensing Switch (Note: 2 switches included & required)	<table border="1" style="width: 100%; border-collapse: collapse;"> <thead> <tr> <th>Pin Dia.</th> <th>BTM Number</th> </tr> </thead> <tbody> <tr> <td>6.00mm</td> <td><b>PD226300A</b></td> </tr> <tr> <td>8.00mm</td> <td><b>PD226500A</b></td> </tr> <tr> <td>10.00mm</td> <td><b>PD226700A</b></td> </tr> <tr> <td>12.00mm</td> <td><b>PD226900A</b></td> </tr> </tbody> </table>	Pin Dia.	BTM Number	6.00mm	<b>PD226300A</b>	8.00mm	<b>PD226500A</b>	10.00mm	<b>PD226700A</b>	12.00mm	<b>PD226900A</b>
Pin Dia.	BTM Number												
6.00mm	<b>PD226300A</b>												
8.00mm	<b>PD226500A</b>												
10.00mm	<b>PD226700A</b>												
12.00mm	<b>PD226900A</b>												
		<b>MPBDC =</b> Balluf DC Magnetic Position Sensing Switch (Note: 2 switches included & required)											
		<b>NS = No Switch</b>											



**PLC25 LIGHT DUTY PIN CLAMP**



**PIN DIAMETERS**

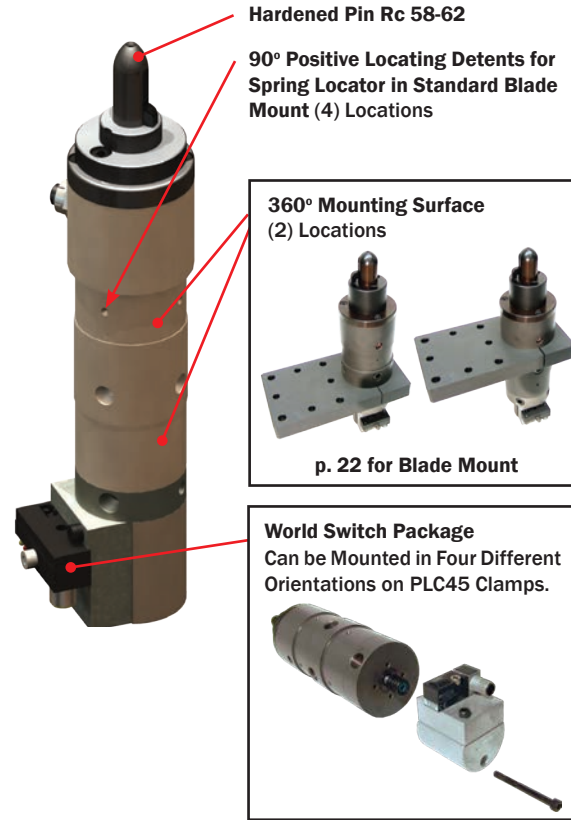


**NOTE:** BTM Pin Clamps can be ordered with custom designed (non-standard) pins, donuts, and/or fingers. In such instances, a Special Assembly number will be issued by BTM Product Engineering Department. This number must be referenced when ordering a non-standard pin clamp.

## PLC45 PIN CLAMP

A non-locking pin locator clamp designed to clamp through holes or slots.

<b>Hole/Slot Size</b>	12.8mm - 18mm*
<b>Clamping Force</b>	578N @ 5.5BAR [130lbf @ 80PSI]
<b>Finger Travel</b>	15mm [0.590in] Total Consists of: <ul style="list-style-type: none"> <li>• 5mm [0.197in] rotational</li> <li>• 10mm [0.394in] straight line pull down stroke</li> </ul>
<b>Bore Diameter</b>	44.5mm [1.75in]
<b>Cylinder Stroke</b>	15.0mm [0.59in]



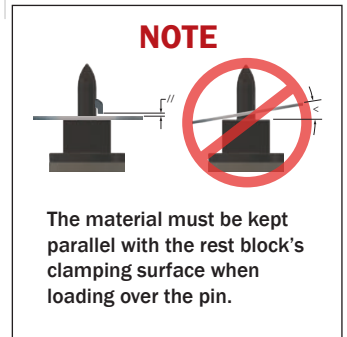
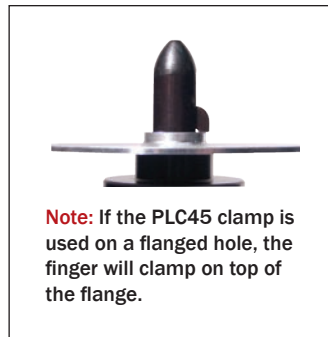
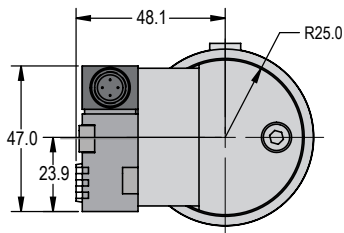
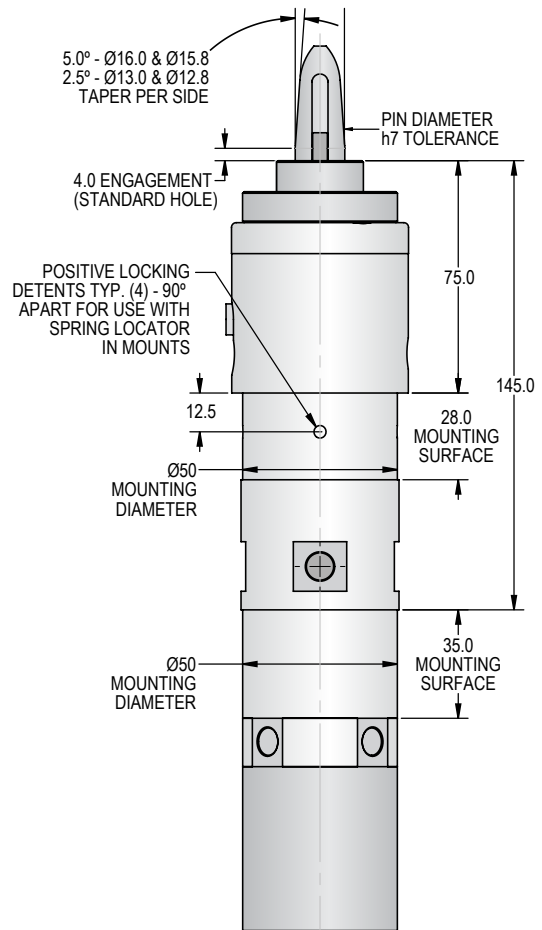
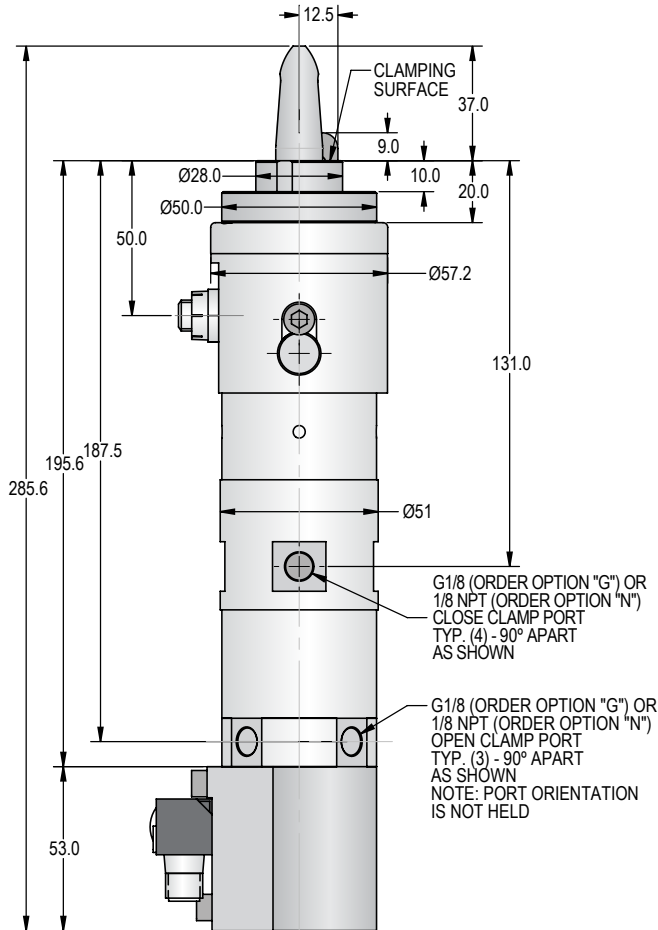
### HOW TO ORDER

To request a quote or place an order, please refer to BTM Global Operations Sales Support on the last page of this catalog.

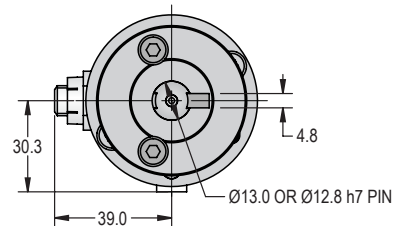
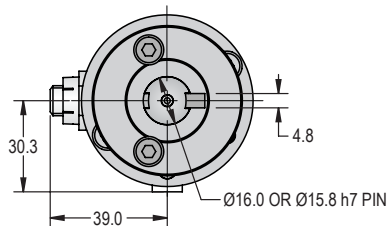
CLAMP SELECTION		PIN SELECTION			SENSING		SPECIAL ASSEMBLY NUMBER				
PLC45	N	13.00	PT	BL	PDC		XXXXXXX				
CLAMP SERIES	PORT OPTION	PIN DIAMETER		PIN STYLE	PIN COATING	<p><b>NS</b> (No Switch)</p>	<p><b>WE DO SPECIALS!</b></p> <p>BTM Pin Clamps can be ordered with custom designed (non-standard) pins, donuts, and/or fingers. In such cases, a Special Assembly Number will be issued by BTM Product Engineering Department. This number must be referenced when ordering a non-standard pin clamp.</p>				
		Diameter	Clamp Weight					<p><b>PT =</b> Tapered Pin</p>	<p><b>BL =</b> Black Oxide</p>	<p><b>PDC</b> (Pepperl + Fuchs® DC) [Optional]</p>	
		12.80mm	1.55kg [3.41lbs]								<p><b>TDC</b> (Turck DC) [Optional]</p>
		13.00mm	1.55kg [3.41lbs]								
		15.80mm	1.56kg [3.44lbs]								
16.00mm	1.56kg [3.44lbs]										
See p.7		* Additional pin diameters are available as a Special Assembly.		See p. 23		<p>Special "Donut" Example</p> <p>Special Pin Example</p>					

Other switch brands are available.

**PLC45 PIN CLAMP**



**PIN DIAMETERS**



## PLC63 PIN CLAMP

A non-locking pin locator clamp designed to clamp through holes or slots.

<b>Hole/Slot Size</b>	19.8mm - 40mm*
<b>Clamping Force</b>	1334N @ 5.5BAR [300lbf @ 80PSI]
<b>Finger Travel</b>	15mm [0.590in] Total Consists of: <ul style="list-style-type: none"> <li>• 5mm [0.197in] rotational</li> <li>• 10mm [0.394in] straight line pull down stroke</li> </ul>
<b>Bore Diameter</b>	63mm [2.50in]
<b>Cylinder Stroke</b>	15.0mm [0.59in]

**MANUAL OPERATION AVAILABLE**  
(CONTACT BTM FOR INFORMATION)

**Hardened Pin Rc 58-62**

**90° Positive Locating Detents for Spring Locator in Standard Blade Mount (8) Locations**

**360° Mounting Surface (2) Locations**

**p. 22 for Blade Mount**

**World Switch Package**  
Can be Mounted in Four Different Orientations on PLC63 Clamps.

### HOW TO ORDER

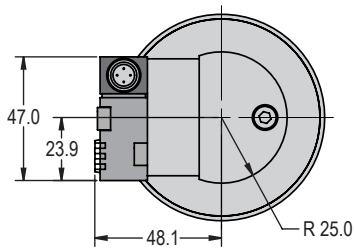
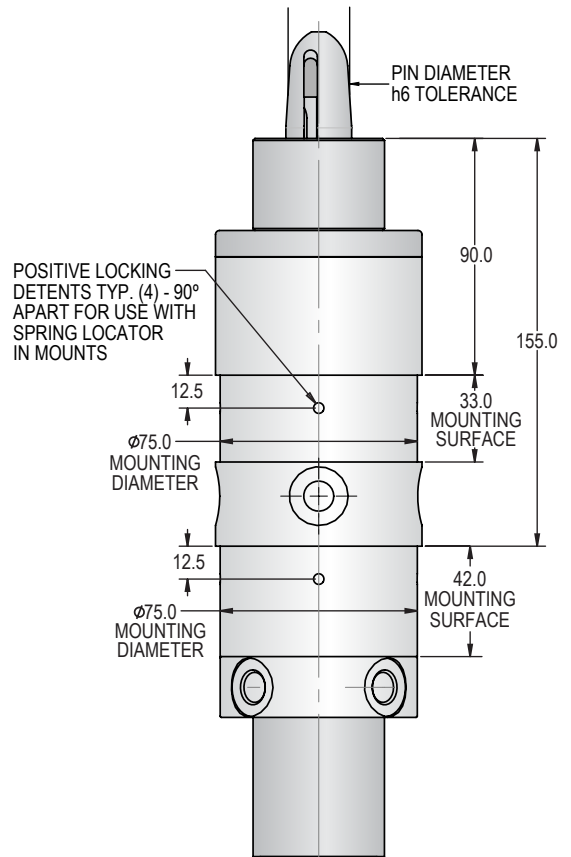
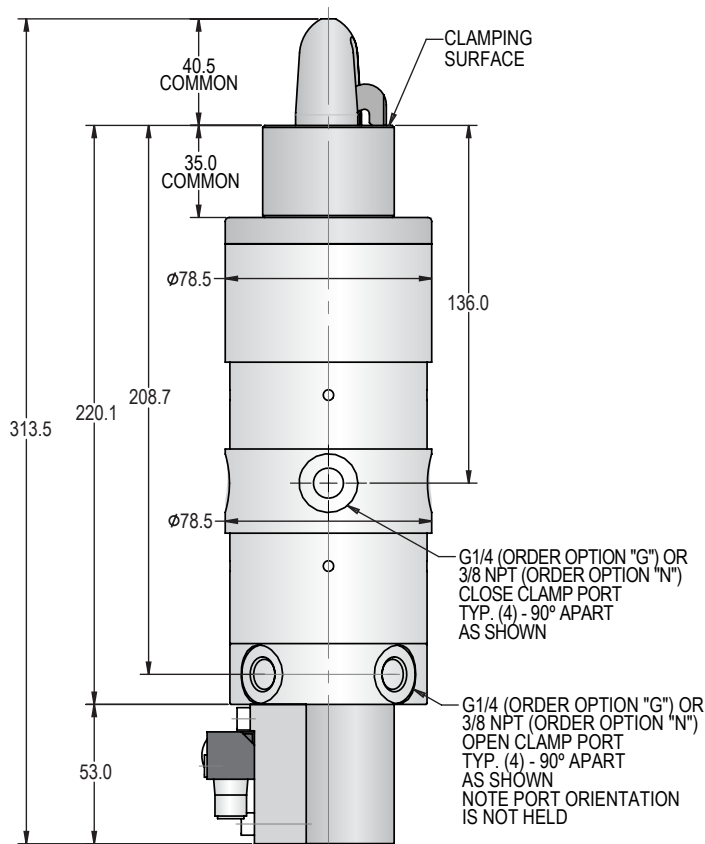
**!** To request a quote or place an order, please refer to BTM Global Operations Sales Support on the last page of this catalog.

CLAMP SELECTION		PIN SELECTION				SENSING	SPECIAL ASSEMBLY NUMBER			
PLC63	N	20.00		PT	SH	BL	PDC	XXXXXXX		
<b>CLAMP SERIES</b>	<b>PORT OPTION</b> N = 3/8 NPT G = G1/4	<b>PIN DIAMETER</b>			<b>PIN STYLE</b> PT = Tapered Pin	<b>HOLE TYPE</b>		<b>PIN COATING</b> BL = Black Oxide	<b>SENSING</b>	<b>SPECIAL ASSEMBLY NUMBER</b>
		Diameter	Clamp Weight	Flange Hole Option?		<b>SH = Standard</b>				
		19.80mm	3.04kg [6.70lbs]	No						
		20.00mm	3.04kg [6.70lbs]	No		<b>FL = Flanged</b>				
		24.80mm	3.08kg [6.80lbs]	Yes						
		25.00mm	3.08kg [6.80lbs]	Yes						
		29.80mm	3.86kg [8.52lbs]	Yes						
		30.00mm	3.86kg [8.52lbs]	Yes						
		34.80mm	3.92kg [8.65lbs]	No						
		35.00mm	3.92kg [8.65lbs]	No						
39.80mm	3.99kg [8.79lbs]	Yes								
40.00mm	3.99kg [8.79lbs]	Yes								
See p.9										
* Additional pin diameters are available as a Special Assembly.										
								<p><b>WE DO SPECIALS!</b></p> <p>BTM Pin Clamps can be ordered with custom designed (non-standard) pins, donuts, and/or fingers. In such cases, a <b>Special Assembly Number</b> will be issued by BTM Product Engineering Department. This number must be referenced when ordering a non-standard pin clamp.</p> <p>Special "Donut" Example</p>		

Other switch brands are available.

See p. 23

**PLC63 PIN CLAMP**

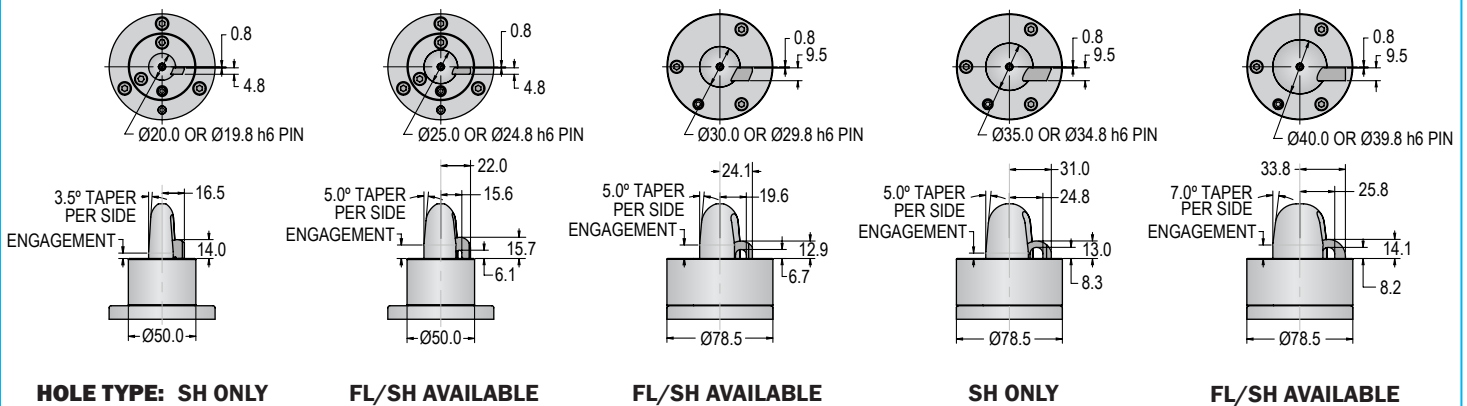


**Note:** If the PLC63 clamp is used on a flanged hole, the finger will clamp over the flange. (Available on certain pin diameters see p.8)

**NOTE**

The material must be kept parallel with the rest block's clamping surface when loading over the pin.

**PIN DIAMETERS**



## SFC63 HOOK CLAMP

A non-locking single finger clamp designed to clamp through holes or slots.

<b>Hole/Slot Size</b>	18mm - 40mm*
<b>Clamping Force</b>	1334N @ 5.5BAR [300lbf @ 80PSI]
<b>Finger Travel</b>	15mm [0.590in] Total Consists of: <ul style="list-style-type: none"> <li>• 5mm [0.197in] rotational</li> <li>• 10mm [0.394in] straight line pull down stroke</li> </ul>
<b>Bore Diameter</b>	63mm [2.50in]
<b>Cylinder Stroke</b>	15.0mm [0.59in]



**90° Positive Locating Detents for Spring Locator in Standard Blade Mount.**  
(8) Locations



### HOW TO ORDER

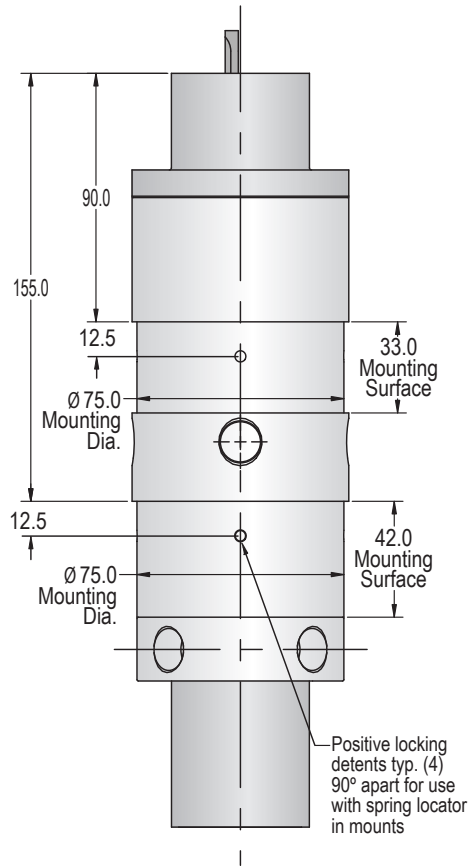
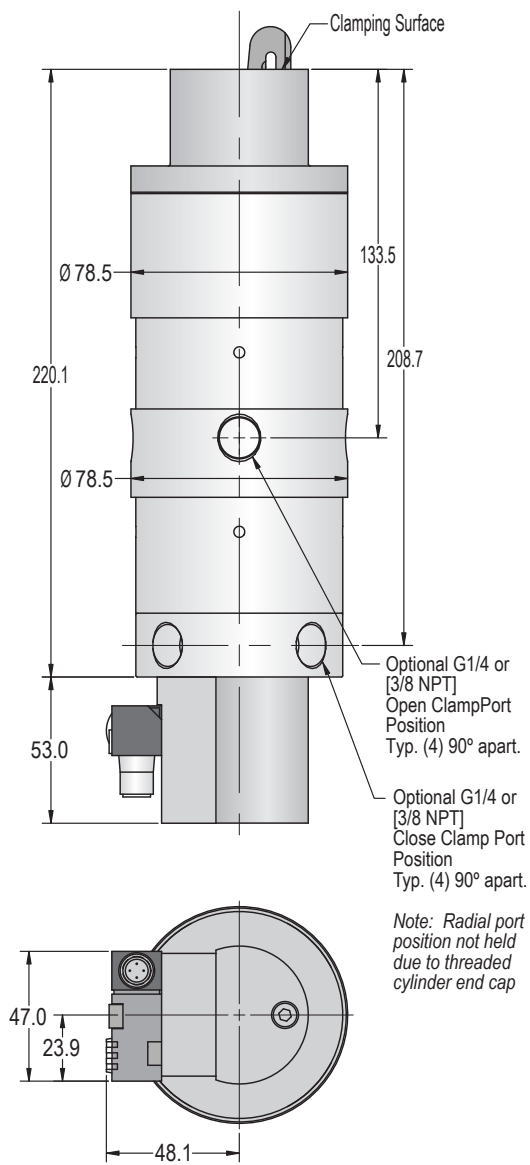


To request a quote or place an order, please refer to BTM Global Operations Sales Support on the last page of this catalog.

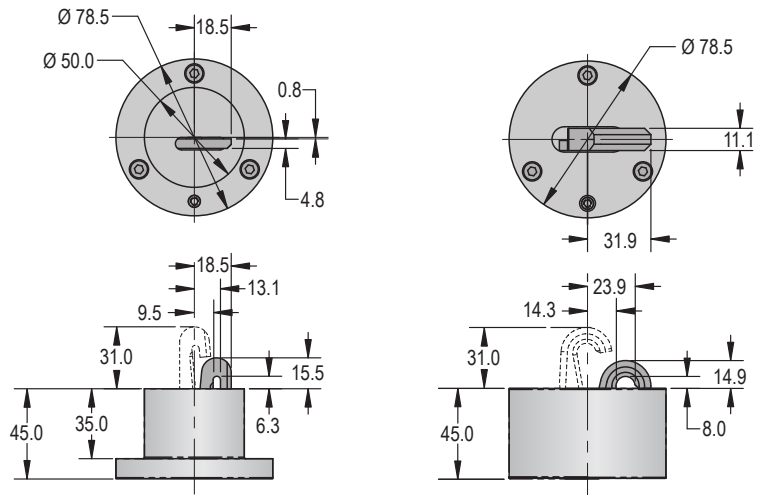
CLAMP SELECTION		HOLE/SLOT RANGE		SENSING		SPECIAL ASSEMBLY NUMBER	
<b>SFC63</b>	<b>N</b>	<b>30-40</b>		<b>PDC</b>		<b>XXXXXXX</b>	
<b>CLAMP SERIES</b>	<b>PORT OPTION</b>	<b>Diameter</b>	<b>Clamp Weight</b>		<b>NS</b> (No Switch)	<b>WE DO SPECIALS!</b> BTM Single Finger (Hook) Clamps can be ordered with custom designed (non-standard) donuts, and/or fingers. In such cases, a <b>Special Assembly Number</b> will be issued by BTM Product Engineering Department. This number must be referenced when ordering a non-standard single finger (hook) clamp.	
	<b>N = 3/8 NPT</b>	<b>18-29mm</b>	2.70kg [5.96lbs]		<b>PDC</b> (Pepperl + Fuchs® DC) [Optional]		
	<b>G = G1/4</b>	<b>30-40mm</b>	3.52kg [7.77lbs]		<b>TDC</b> (Turck DC) [Optional]		
		See p.11		See p. 23		 Special "Donut" Example	

Other switch brands are available.

**SFC63 HOOK CLAMP**



**HOLE/SLOT RANGE**



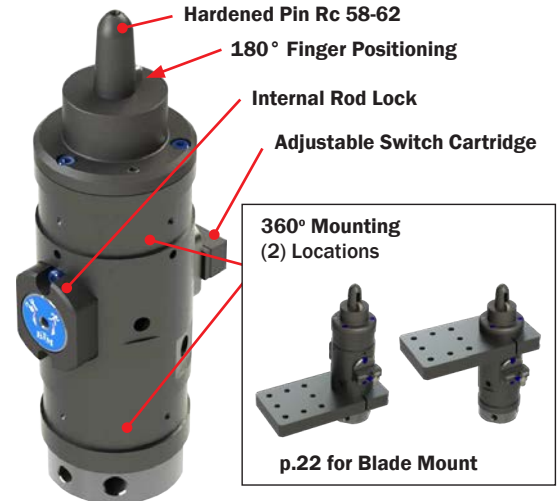
**18-29 HOLE/SLOT RANGE**

**30-40 HOLE/SLOT RANGE**

## RLPC ROD LOCKING PIN CLAMP

RLPC clamps may be ordered with a rod locking feature, allowing the clamp to retain a part when air pressure is removed/lost. However, clamping force will not be maintained. If you need to maintain clamping force after air pressure is removed/lost, please see our LPLC or LSFC.

	RLPC45	RLPC63
Hole/Slot Size	12.8mm - 16mm*	19.8mm - 40mm*
Clamping Force	578N @ 5.5BAR [130lbf @ 80PSI]	1334N @ 5.5BAR [300lbf @ 80PSI]
Finger Travel	15mm [0.590in] Total Consists of: <ul style="list-style-type: none"> <li>• 5mm [0.197in] rotational</li> <li>• 10mm [0.394in] straight line pull down stroke</li> </ul>	
Bore Diameter	45mm [1.77in]	63mm [2.50in]
Cylinder Stroke	15mm [0.59in]	



### HOW TO ORDER

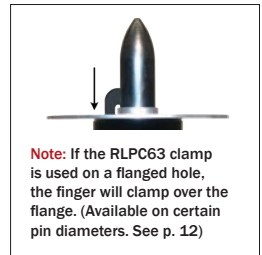
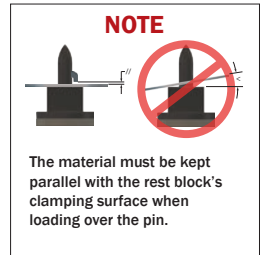
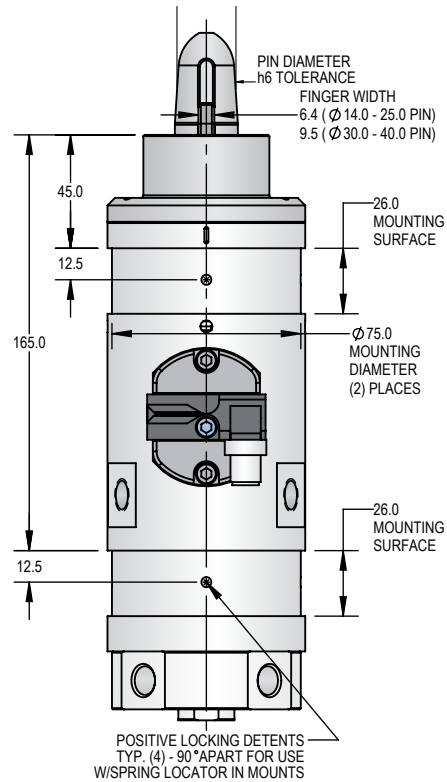
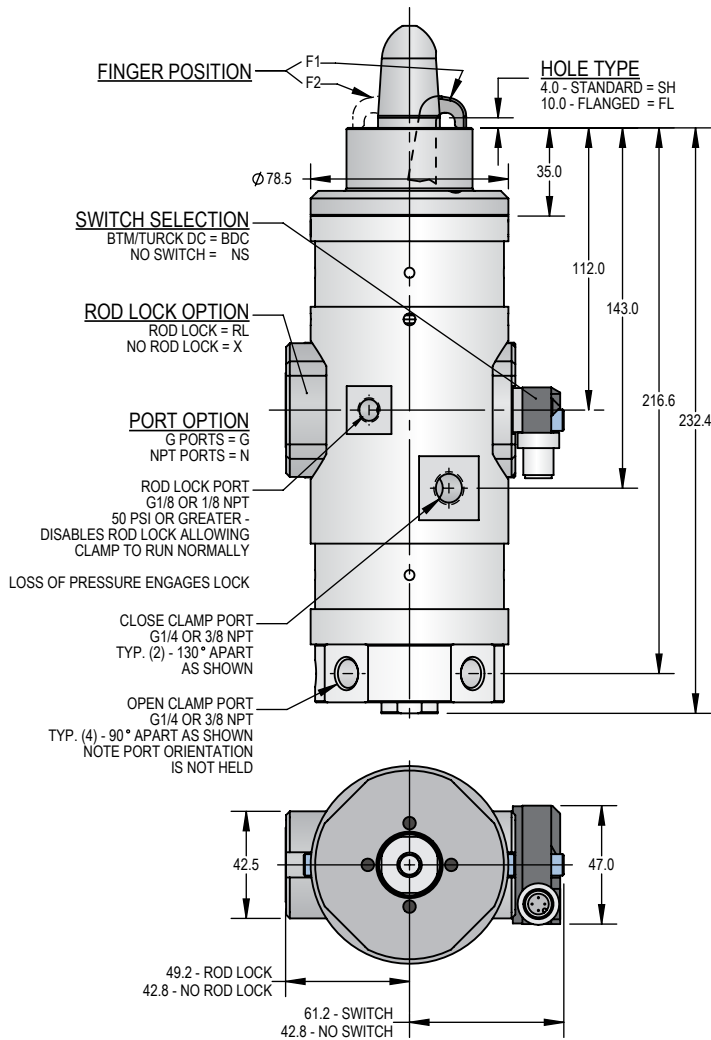


To request a quote or place an order, please refer to BTM Global Operations Sales Support on the last page of this catalog.

CLAMP SELECTION			PIN SELECTION				SENSING	ROD LOCK	SPECIAL ASSEMBLY NUMBER			
RLPC	63	G	40.00				SH	F1	BDC	RL	XXXXXX	
<b>CLAMP SERIES</b>	<b>CLAMP SIZE</b>	<b>PORT OPTION</b>	<b>PIN DIAMETER</b>				<b>HOLE TYPE</b>	<b>FINGER POSITION</b>			<b>We Do Specials!</b> BTM Pin Clamps can be ordered with custom designed (non-standard) pins, donuts, and/or fingers. In such cases, a Special Assembly Number will be issued by BTM Product Engineering Department. This number must be referenced when ordering a non-standard pin clamp.	
	45	N = 3/8 NPT	45	Clamp Size	Diameter	Clamp Weight	Flange Hole Option?	SH = Standard	F1	BDC (Turck DC) [Optional]		RL (Rod Lock)
	63	G = G1/4		12.80mm	3.2kg [7.04lbs]	No	 4.0 ENGAGEMENT					
				13.00mm	3.2kg [7.05lbs]	No		 10.0 ENGAGEMENT	FL only available on certain pin diameters (see chart)			
				14.00mm	3.2kg [7.06lbs]	No	 10.0 ENGAGEMENT					
				15.80mm	3.2kg [7.08lbs]	No						
			16.00mm	3.2kg [7.08lbs]	No							
			19.80mm	3.4kg [7.50lbs]	No							
			20.00mm	3.4kg [7.51lbs]	No							
			24.80mm	3.5kg [7.61lbs]	Yes							
			25.00mm	3.5kg [7.62lbs]	Yes							
			29.80mm	4.0kg [8.74lbs]	Yes							
			30.00mm	4.0kg [8.75lbs]	Yes							
			34.80mm	4.0kg [8.87lbs]	No							
			35.00mm	4.0kg [8.88lbs]	No							
			39.80mm	4.1kg [9.03lbs]	Yes							
			40.00mm	4.1kg [9.04lbs]	Yes							
			See p. 13									

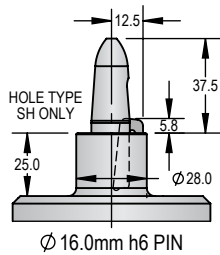
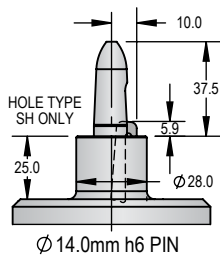
\* Additional pin diameters are available as a Special Assembly.

**RLPC ROD LOCKING PIN CLAMP**

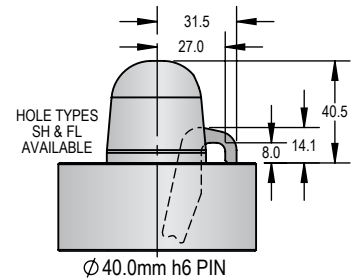
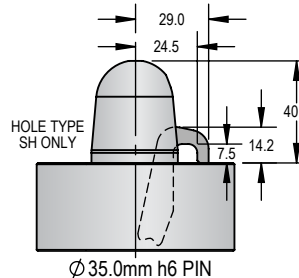
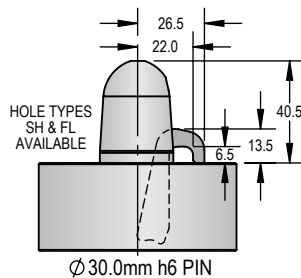
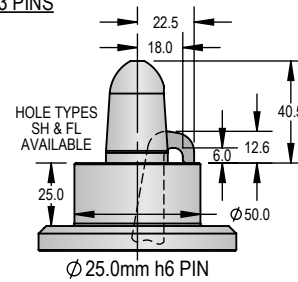
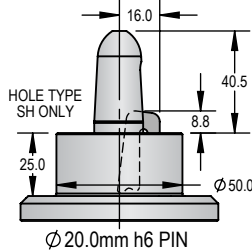


**PIN DIAMETERS**

**RLPC45 PINS**



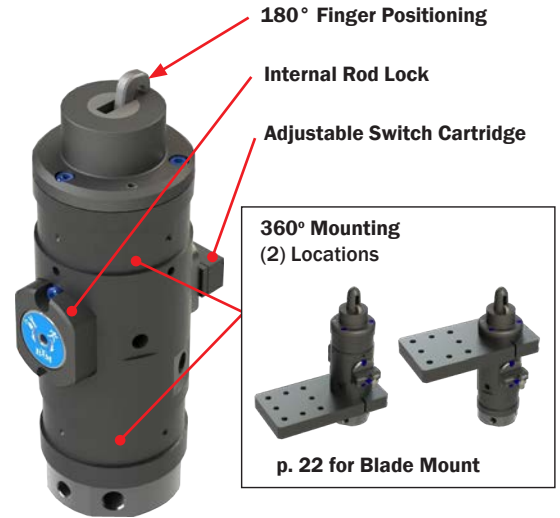
**RLPC63 PINS**



## RLSFC63 ROD LOCKING HOOK CLAMP

RLSFC clamps may be ordered with a rod locking feature, allowing the clamp to retain a part when air pressure is removed/lost. However, clamping force will not be maintained. If you need to maintain clamping force after air pressure is removed/lost, please see our LPLC or LSFC.

<b>Hole/Slot Size</b>	23mm - 40mm*
<b>Clamping Force</b>	1334N @ 5.5BAR [300lbf @ 80PSI]
<b>Finger Travel</b>	15mm [0.590in] Total Consists of: <ul style="list-style-type: none"> <li>• 5mm [0.197in] rotational</li> <li>• 10mm [0.394in] straight line pull down stroke</li> </ul>
<b>Bore Diameter</b>	63mm [2.50in]
<b>Cylinder Stroke</b>	15mm [0.59in]



### HOW TO ORDER

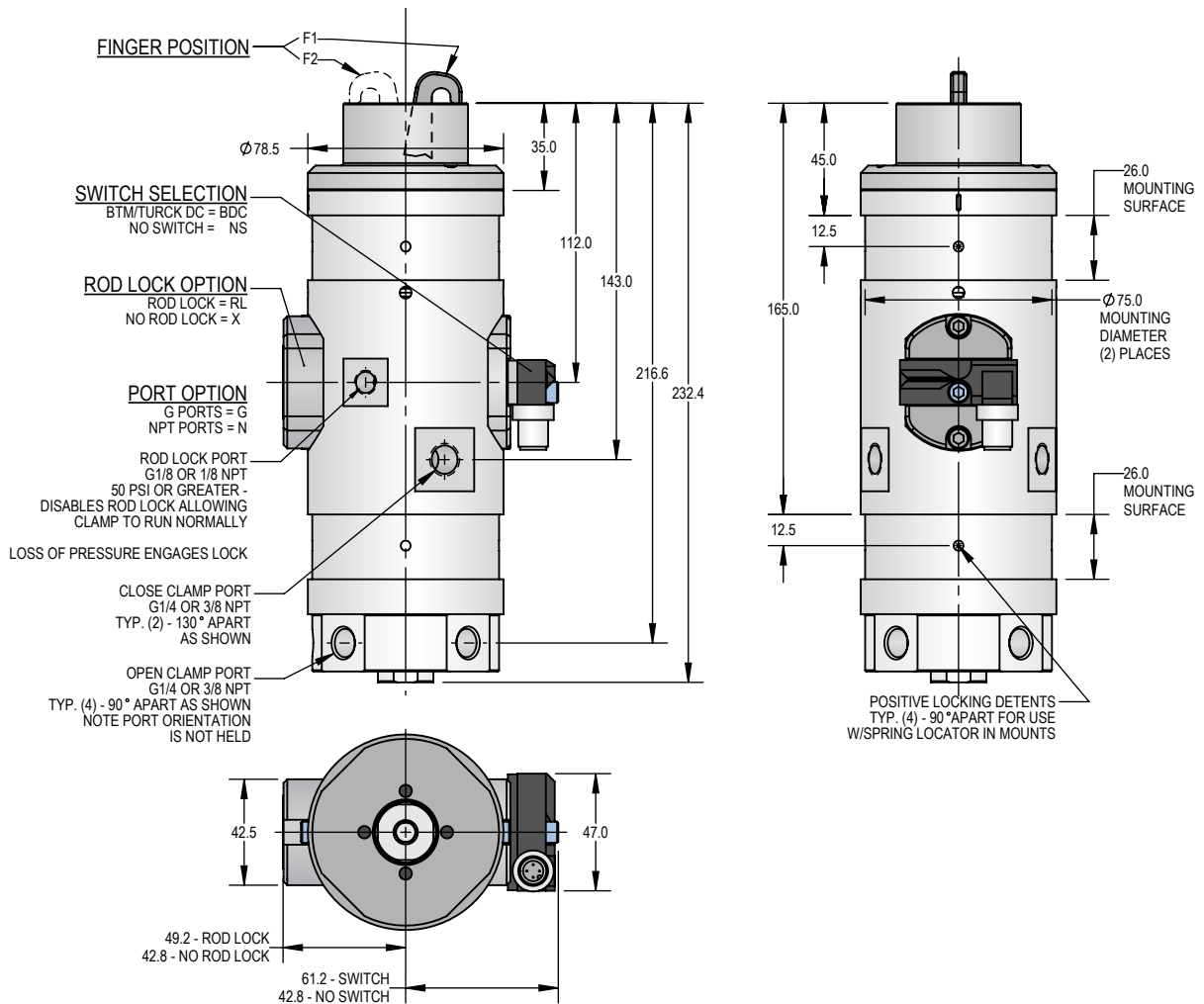


To request a quote or place an order, please refer to BTM Global Operations Sales Support on the last page of this catalog.

CLAMP SELECTION			MODEL SELECTION		SENSING	ROD LOCK	SPECIAL ASSEMBLY NUMBER
RLSFC	63	G	25	F1	BDC	RL	XXXXXXX
<b>CLAMP SERIES</b>	<b>CLAMP SIZE</b>	<b>PORT OPTION</b>	<b>MODEL</b>		<b>FINGER POSITION</b>		<b>WE DO SPECIALS!</b> BTM Pin Clamps can be ordered with custom designed (non-standard) pins, donuts, and/or fingers. In such cases, a <b>Special Assembly Number</b> will be issued by BTM Product Engineering Department. This number must be referenced when ordering a non-standard pin clamp.
	63	N = 3/8 NPT	Hole Diameter	Clamp Weight	F1		
		G = G1/4	25mm	23-30 3.4kg [7.42lbs]	F2		
			40mm	36-40 3.8kg [8.46lbs]			
			See p. 15				
					See p. 23		
							 Special "Donut" Example

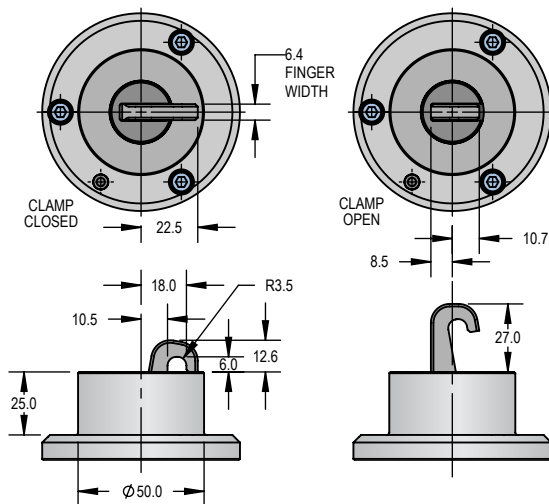
*If no finger position is specified, F1 will be default.*

**RLSFC63 ROD LOCKING HOOK CLAMP**



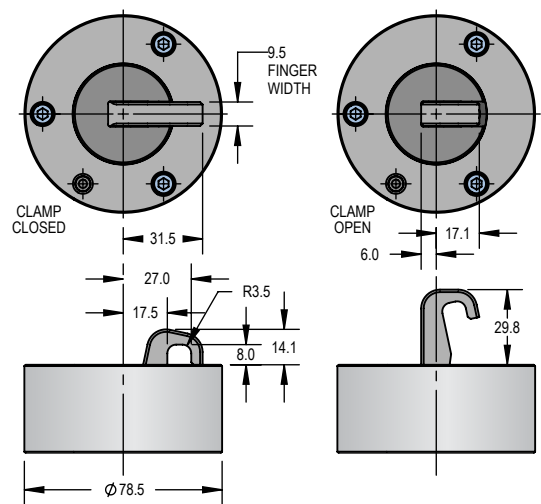
**HOLE/SLOT RANGE**

**MODEL 25**



**23-30 HOLE/SLOT RANGE**

**MODEL 40**

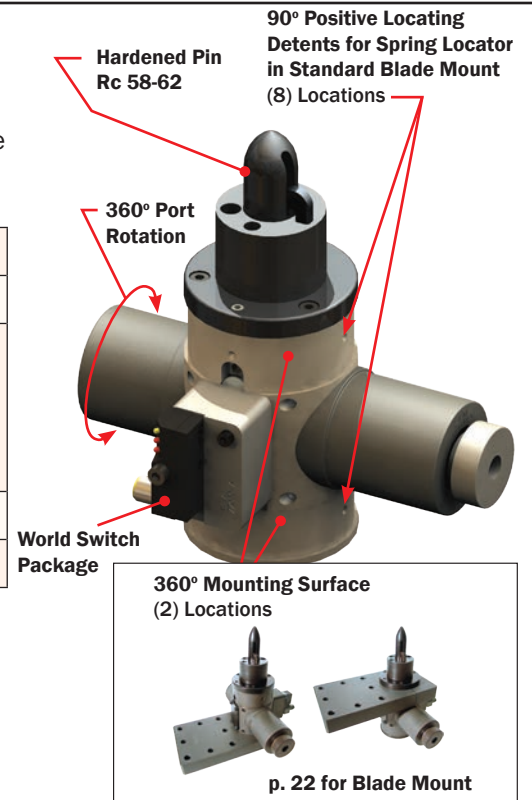


**36-40 HOLE/SLOT RANGE**

## LPLC38 LOCKING PIN CLAMP

A locking pin locator clamp designed to stay locked *and* maintain clamping force even if air pressure is removed/lost.


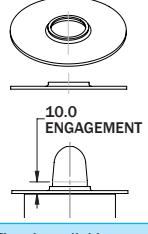


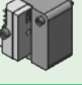
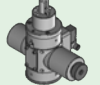
<b>Hole/Slot Size</b>	19.8mm - 40mm*
<b>Clamping Force</b>	890N - 1334N @ 5.5BAR [200 - 300lbf @ 80PSI]
<b>Finger Travel</b>	15mm [0.590in] Total Consists of: <ul style="list-style-type: none"> <li>• 5mm [0.197in] rotational</li> <li>• 10mm [0.394in] straight line pull down stroke</li> <li>• 3mm [0.118in] locking range (from clamping surface)</li> </ul>
<b>Bore Diameter</b>	38mm [1.50in]
<b>Cylinder Stroke</b>	38.5mm [1.52in]



### HOW TO ORDER

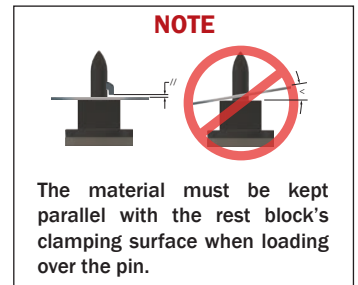
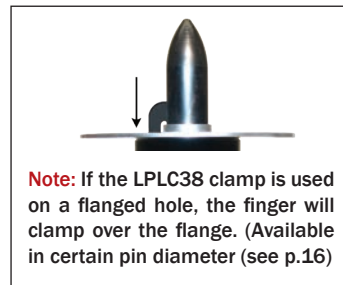
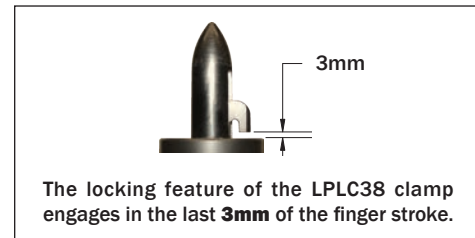
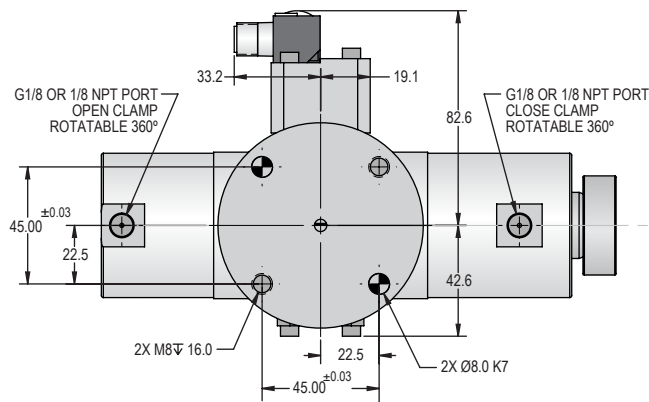
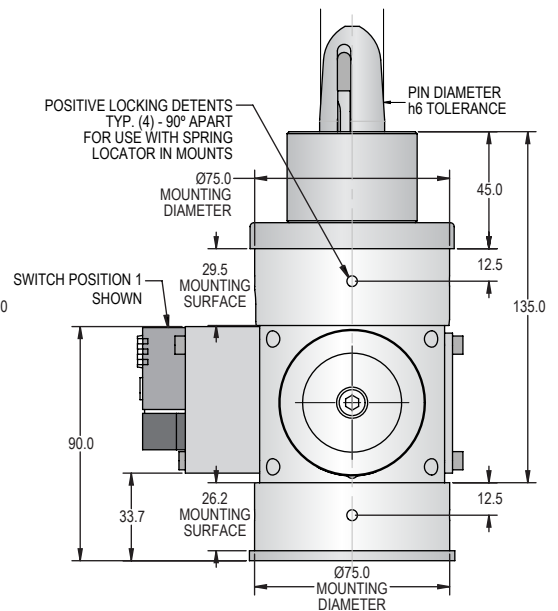
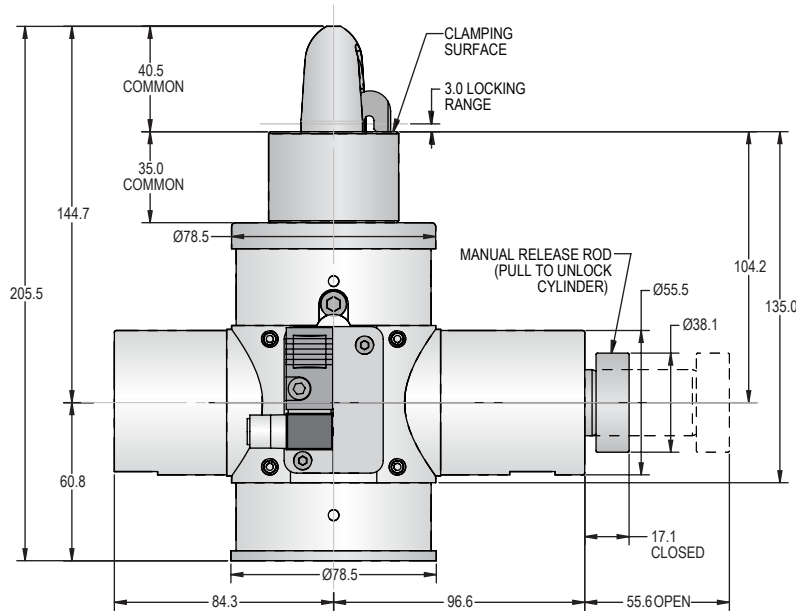


To request a quote or place an order, please refer to BTM Global Operations Sales Support on the last page of this catalog.

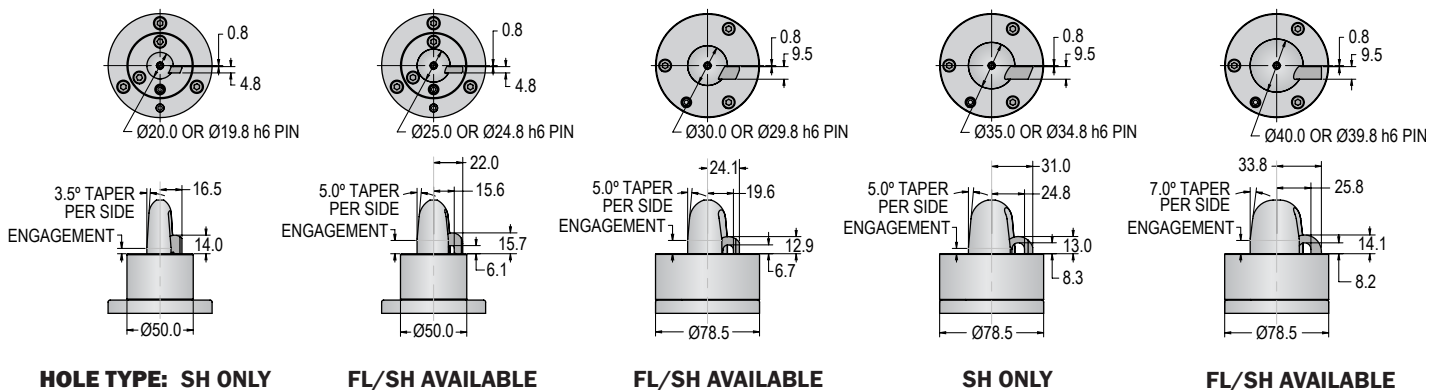
CLAMP SELECTION		PIN SELECTION				SENSING		SPECIAL ASSEMBLY NUMBER		
LPLC38	N	20.00	PT	SH	BL	PDC	1	XXXXXXX		
CLAMP SERIES	PORT OPTION	PIN DIAMETER			PIN STYLE	HOLE TYPE	PIN COATING	SWITCH OPTION	SWITCH POSITION	WE DO SPECIALS! BTM Pin Clamps can be ordered with custom designed (non-standard) pins, donuts, and/or fingers. In such cases, a Special Assembly Number will be issued by BTM Product Engineering Department. This number must be referenced when ordering a non-standard pin clamp. 
		N = 1/8 NPT	Diameter	Clamp Weight						
	G = G1/8	19.80mm			3.54kg [7.81lbs]	No	FL = Flanged 	PDC (Pepperl + Fuchs® DC) [Optional] 	1 (Front) 	
	20.00mm	3.54kg [7.81lbs]	No	FL only available on certain pin diameters (see chart)	TDC (Turck DC) [Optional] 	2 (Back) 				
	24.80mm	3.59kg [7.91lbs]	Yes				See p.17	See p. 23 Other switch brands are available.		
	25.00mm	3.59kg [7.91lbs]	Yes							
	29.80mm	4.33kg [9.54lbs]	Yes							
	30.00mm	4.33kg [9.54lbs]	Yes							
	34.80mm	4.40kg [9.69lbs]	No							
	35.00mm	4.40kg [9.69lbs]	No							
39.80mm	4.46kg [9.83lbs]	Yes								
40.00mm	4.46kg [9.83lbs]	Yes								

\* Additional pin diameters are available as a Special Assembly.

**LPLC38 LOCKING PIN CLAMP**



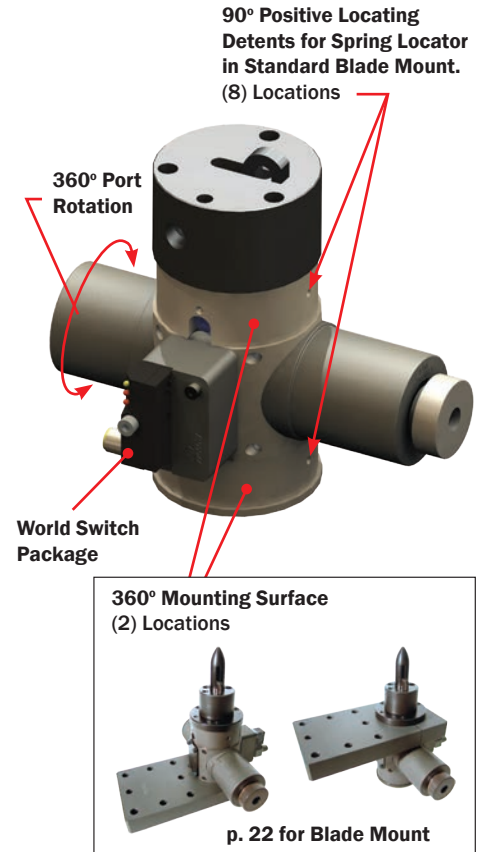
**PIN DIAMETERS**



## LSFC38 LOCKING HOOK CLAMP

A locking single finger clamp designed to stay locked *and* maintain clamping force even if air pressure is removed/lost.


<b>Hole/Slot Size</b>	18mm - 40mm*
<b>Clamping Force</b>	890N - 1334N @ 5.5BAR [200 - 300lbf @ 80PSI]
<b>Finger Travel</b>	15mm [0.590in] Total Consists of: <ul style="list-style-type: none"> <li>• 5mm [0.197in] rotational</li> <li>• 10mm [0.394in] straight line pull down stroke</li> <li>• 3mm [0.118in] locking range (from clamping surface)</li> </ul>
<b>Bore Diameter</b>	38mm [1.50in]
<b>Cylinder Stroke</b>	38.5mm [1.52in]



### HOW TO ORDER

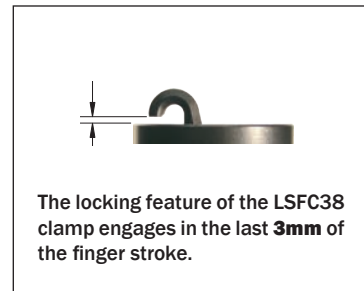
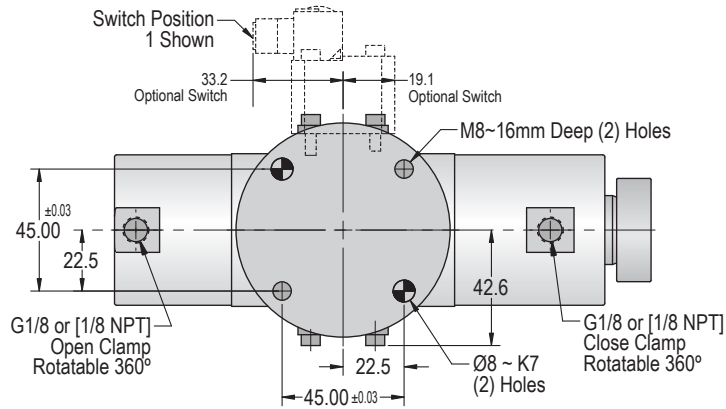
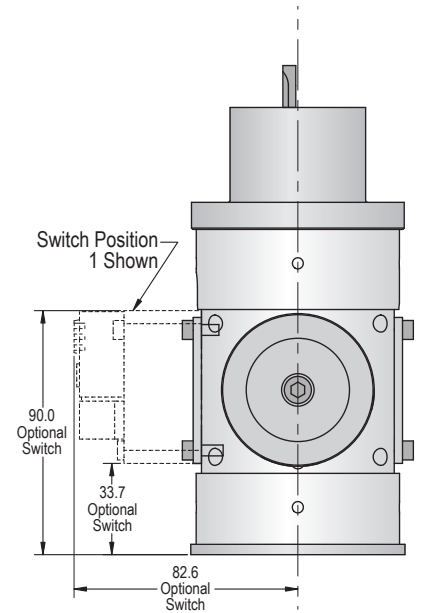
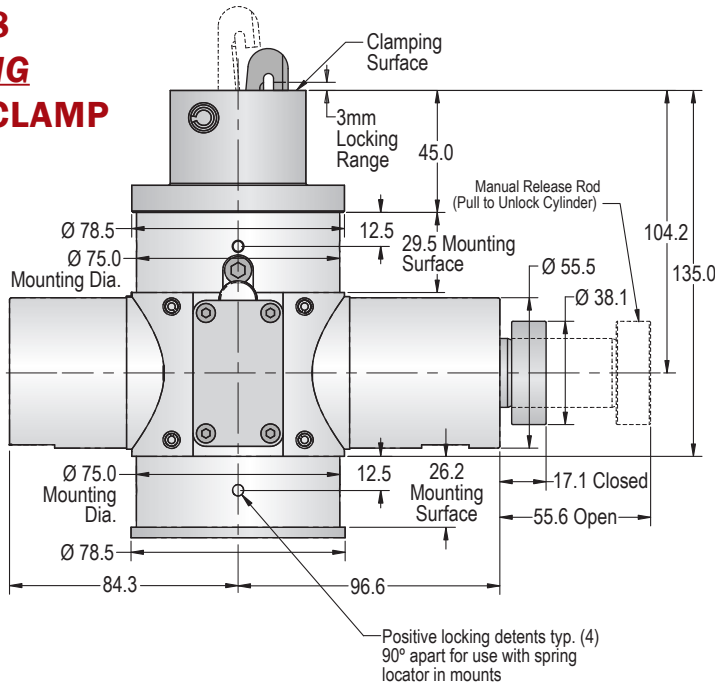


To request a quote or place an order, please refer to BTM Global Operations Sales Support on the last page of this catalog.

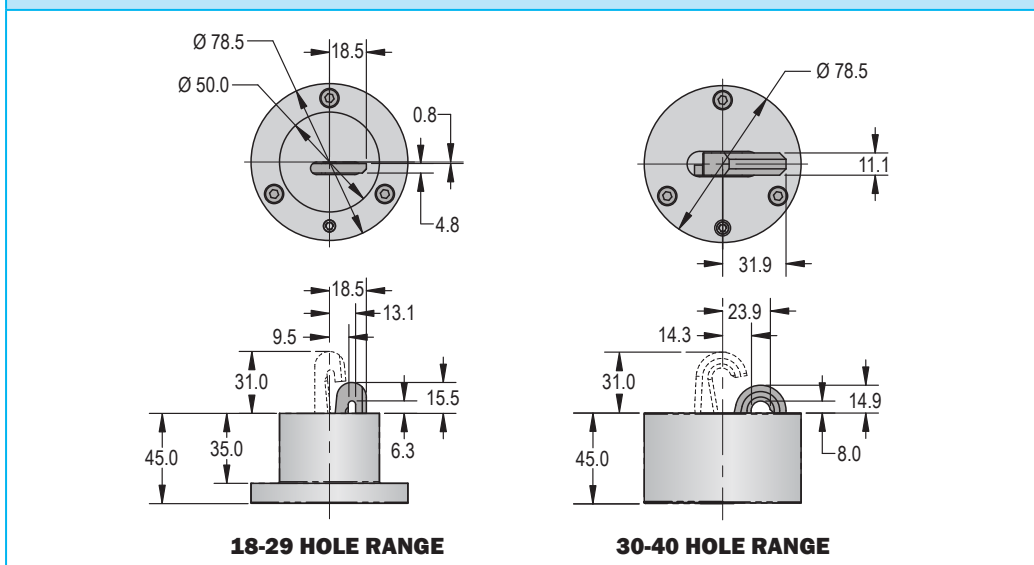
CLAMP SELECTION		HOLE/SLOT RANGE		SENSING		SPECIAL ASSEMBLY NUMBER
<b>LSFC38</b>	<b>N</b>	<b>30-40</b>		<b>PDC</b>	<b>1</b>	<b>XXXXXX</b>
<b>CLAMP SERIES</b>	<b>PORT OPTION</b>	<b>Diameter</b>	<b>Clamp Weight</b>	<b>SWITCH OPTION</b>	<b>SWITCH POSITION</b>	<b>WE DO SPECIALS!</b> BTM Single Finger (Hook) Clamps can be ordered with custom designed (non-standard) donuts, and/or fingers. In such cases, a <b>Special Assembly Number</b> will be issued by BTM Product Engineering Department. This number must be referenced when ordering a non-standard single finger (hook) clamp. <div style="text-align: center;">               Special "Donut" Example           </div>
	<b>N = 1/8 NPT</b>	<b>18-29mm</b>	3.29kg [7.25lbs]	<b>NS</b> (No Switch)	<b>NS</b> (No Switch)	
	<b>G = G1/8</b>	<b>30-40mm</b>	3.96kg [8.72lbs]	<b>PDC</b> (Pepperl + Fuchs® DC) <i>[Optional]</i>	<b>1</b> (Front)	
		<b>See p.19</b>		<b>TDC</b> (Turck DC) <i>[Optional]</i>	<b>2</b> (Back)	
				<b>See p. 23</b>		

Other switch brands are available.

**LSFC38  
LOCKING  
HOOK CLAMP**



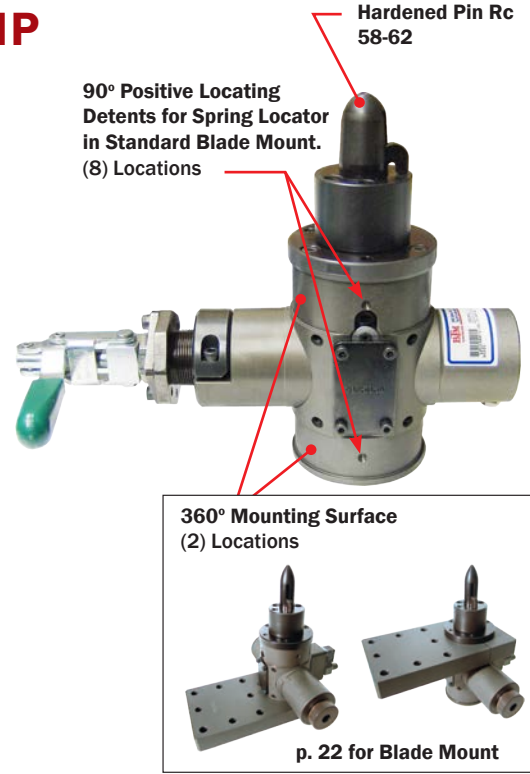
**HOLE/SLOT RANGE**



## LPLC38M LOCKING MANUAL PIN CLAMP

A locking, manually operated pin locator clamp designed to maintain clamping force in the closed (locked) position.

<b>Hole/Slot Size</b>	24.8mm - 40mm*
<b>Clamping Force</b>	1112N [250lbf]
<b>Finger Travel</b>	15mm [0.590in] Total Consists of: <ul style="list-style-type: none"> <li>• 5mm [0.197in] rotational</li> <li>• 10mm [0.394in] straight line pull down stroke</li> <li>• 3mm [0.118in] locking range (from clamping surface)</li> </ul>



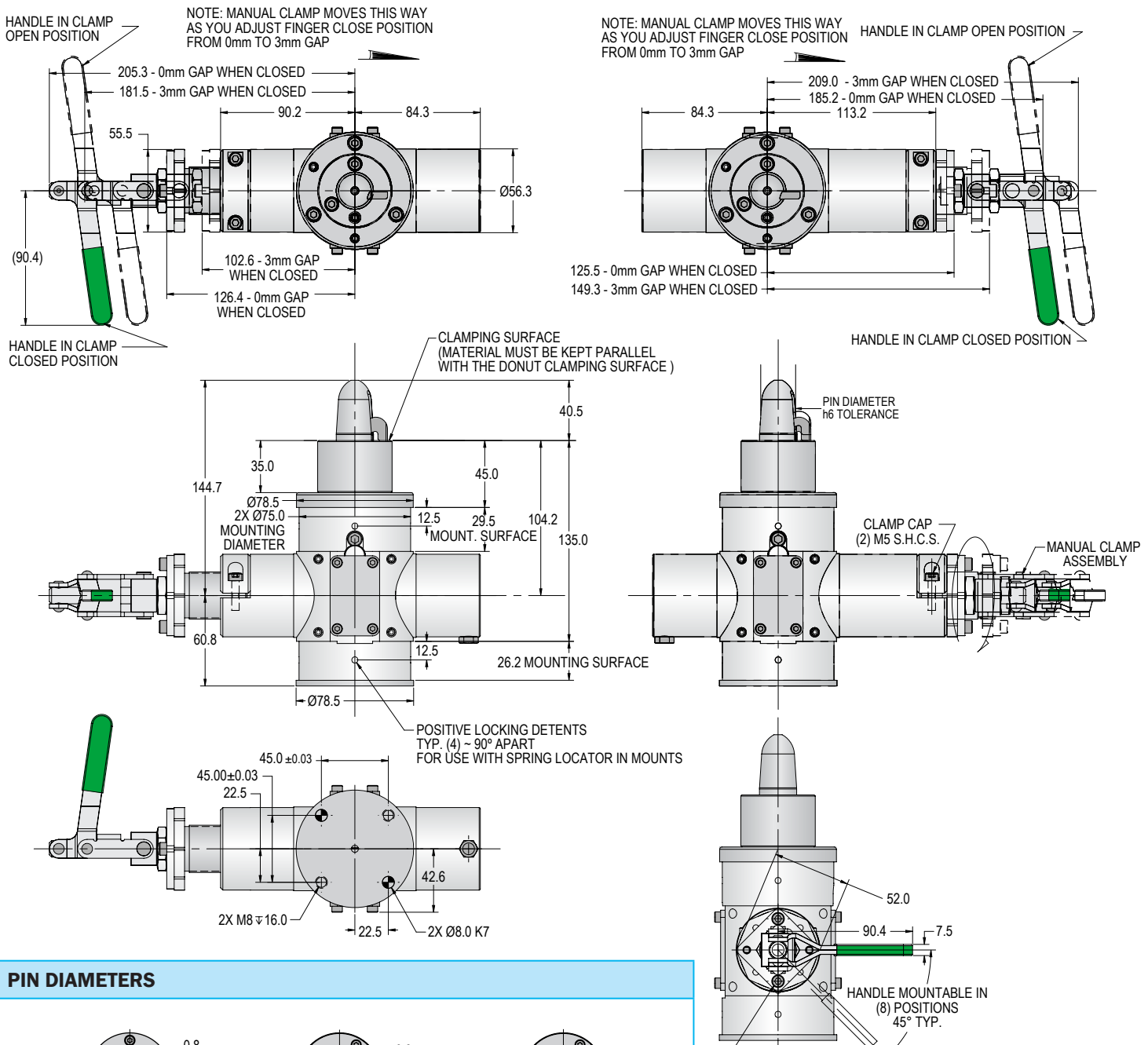
### HOW TO ORDER



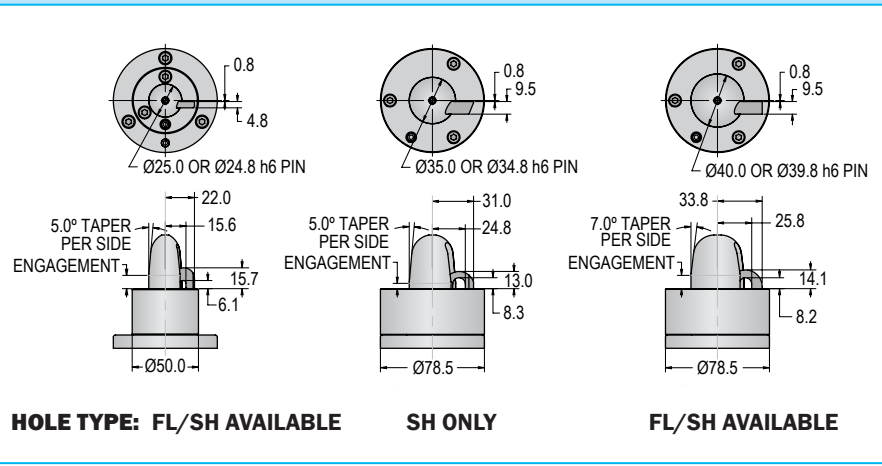
To request a quote or place an order, please refer to BTM Global Operations Sales Support on the last page of this catalog.

CLAMP SELECTION	HANDLE LOCATION	PIN SELECTION				SPECIAL ASSEMBLY NUMBER																						
LPLC38M	L	25.00	PT	SH	BL	XXXXXX																						
<b>CLAMP SERIES</b>	L = Left Side of Clamp R = Right Side of Clamp	<b>PIN DIAMETER</b> <table border="1"> <thead> <tr> <th>Diameter</th> <th>Clamp Weight</th> <th>Flange Hole Option?</th> </tr> </thead> <tbody> <tr> <td>24.80mm</td> <td>3.59kg [7.91lbs]</td> <td>Yes</td> </tr> <tr> <td>25.00mm</td> <td>3.59kg [7.91lbs]</td> <td>Yes</td> </tr> <tr> <td>34.80mm</td> <td>4.40kg [9.69lbs]</td> <td>No</td> </tr> <tr> <td>35.00mm</td> <td>4.40kg [9.69lbs]</td> <td>No</td> </tr> <tr> <td>39.80mm</td> <td>4.46kg [9.83lbs]</td> <td>Yes</td> </tr> <tr> <td>40.00mm</td> <td>4.46kg [9.83lbs]</td> <td>Yes</td> </tr> </tbody> </table> <p>See p.21</p>		Diameter	Clamp Weight	Flange Hole Option?	24.80mm	3.59kg [7.91lbs]	Yes	25.00mm	3.59kg [7.91lbs]	Yes	34.80mm	4.40kg [9.69lbs]	No	35.00mm	4.40kg [9.69lbs]	No	39.80mm	4.46kg [9.83lbs]	Yes	40.00mm	4.46kg [9.83lbs]	Yes	<b>PIN STYLE</b> PT = Tapered Pin	<b>HOLE TYPE</b> SH = Standard  FL = Flanged  FL only available on certain pin diameters (see chart)	<b>PIN COATING</b> BL = Black Oxide	<b>WE DO SPECIALS!</b> BTM Pin Clamps can be ordered with custom designed (non-standard) pins, donuts, and/or fingers. In such cases, a Special Assembly Number will be issued by BTM Product Engineering Department. This number must be referenced when ordering a non-standard pin clamp.
Diameter	Clamp Weight	Flange Hole Option?																										
24.80mm	3.59kg [7.91lbs]	Yes																										
25.00mm	3.59kg [7.91lbs]	Yes																										
34.80mm	4.40kg [9.69lbs]	No																										
35.00mm	4.40kg [9.69lbs]	No																										
39.80mm	4.46kg [9.83lbs]	Yes																										
40.00mm	4.46kg [9.83lbs]	Yes																										
		<small>* Additional pin diameters are available as a Special Assembly.</small>																										

**LPLC38M LOCKING MANUAL PIN CLAMP**



**PIN DIAMETERS**



**Note:** If the LPLC38M clamp is used on a flanged hole, the finger will clamp over the flange. (Available in certain pin diameters. (see p. 20))

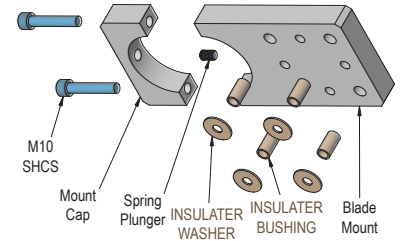
**NOTE**

The material must be kept parallel with the rest block's clamping surface when loading over the pin.

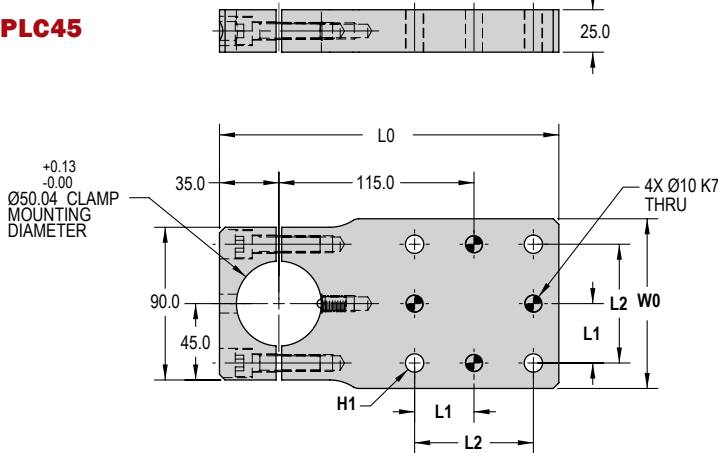
## BLADE MOUNT INFORMATION

Blade style clamp mounts are currently offered in four different configurations: Insulated or non-insulated for C-flex mounting, and insulated or non-insulated for NAAMS mounting. The insulated mounts are used in welding applications, and come with insulating washers and bushings in the screw holes.

**NOTE: It is the customer's responsibility to insulate any dowels required for mounting.**

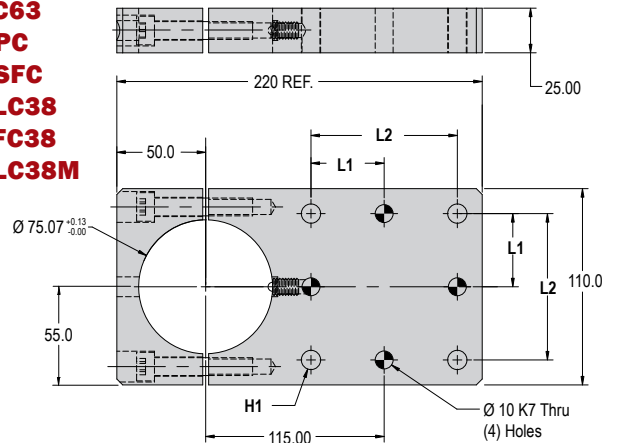


### PLC45



Mount Type	Ø H1 Thru (4) Holes	W0	L0	L1	L2	BTM Number
Insulated C-Flex Mount	12.0 Insulator Bushing	110.0	205.0	41.00	82.00	<b>794400A</b>
C-Flex Mount	12.1	110.0	205.0	41.00	82.00	<b>794400B</b>
Insulated NAAMS Mount	10.0 Insulator Bushing	100.0	200.0	35.00	70.00	<b>794400C</b>
NAAMS Mount	10.8	100.0	200.0	35.00	70.00	<b>794400D</b>

### PLC63 SFC63 RLPC RLSFC LPLC38 LSFC38 LPLC38M



Mount Type	Ø H1 Thru (4) Holes	L1	L2	BTM Number
Insulated C-Flex Mount	12.0 Insulator Bushing	41.00	82.00	<b>794100A</b>
C-Flex Mount	12.1	41.00	82.00	<b>794100B</b>
Insulated NAAMS Mount	10.0 Insulator Bushing	35.00	70.00	<b>794100C</b>
NAAMS Mount	10.8	35.00	70.00	<b>794100D</b>

## MOUNT PLACEMENT

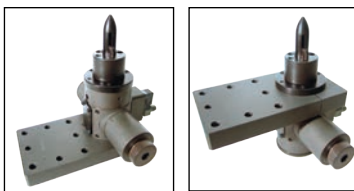
PLC45, PLC63, SFC63, RLPC, RLSFC, LPLC38, and LSFC38 models have two mounting surfaces from which to apply the blade mount (upper & lower). This allows the user flexibility in choosing the placement of the clamping surface relative to the mounting surface.

### PLC, RLPC, SFC & RLSFC Clamps



Lower

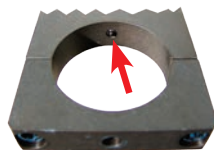
Upper



LPLC & LSFC Clamps

### CLAMP ROTATION

Spring locator for positive locating of mounting reference detents.



Detents are located 4 places 90° apart on round body pin clamps. Detents provided for convenience, but do not need to be used.



## 3-WAY SHIM MOUNT AVAILABLE



Shims X, Y, Z  
± 2.5mm

**SWITCH INFORMATION**

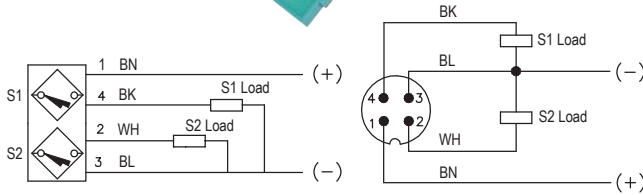
**STANDARD SWITCHES  
FOR PLC45, PLC63, SFC63, LPLC38, & LSFC38**

**PDC - PEPPERL+FUCHS DC**

NBN2-F581-160S6-E8-V1

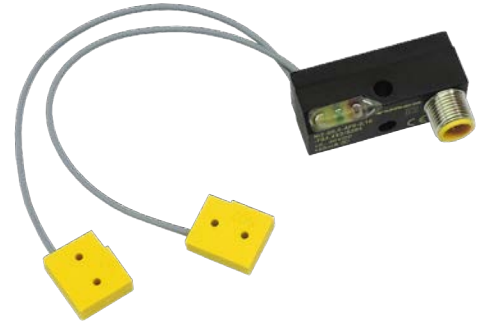


**LED INDICATORS**  
GREEN - POWER ON  
YELLOW - S1 OUTPUT ENERGIZED  
RED - S2 OUTPUT ENERGIZED

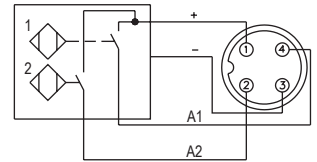


**TDC - TURCK DC**

Ni2Q6.5AP6-0.16-FS4.4X3/S304



**LED INDICATORS**  
YELLOW - S01 OUTPUT ENERGIZED  
GREEN - POWER ON  
RED - S02 OUTPUT ENERGIZED



*Other switches are also available (including Turck AC), but are not stocked by BTM.*

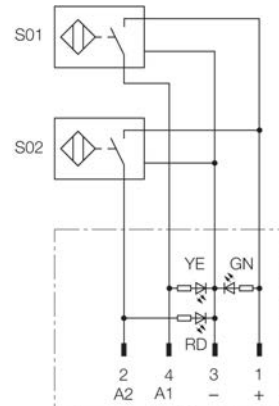
**STANDARD SWITCHES  
FOR RLPC45, RLPC63, RLSFC63**

**BDC - TURCK DC**

Ni2-BTM-0,16-BDS-2AP6X3-H1141/S34



**LED INDICATORS**  
YELLOW - S01 OUTPUT ENERGIZED  
GREEN - POWER ON  
RED - S02 OUTPUT ENERGIZED





## WARRANTY INFORMATION

BTM Company, LLC. warrants its Pin and Hook Clamps against defects in material and workmanship for one (1) million cycles or a period of three (3) years after the ship date from BTM, which ever comes first.

This warranty is limited to replacing or repairing at BTM option, F.O.B. BTM factory, any part found by BTM to be defective in materials and/or workmanship. Any application of a BTM product outside the intended use of the product shall not be warranted by BTM Company, LLC. Furthermore, BTM will not be liable for any expenses incurred for repairs or replacement made outside BTM facilities without written consent (or damages arising out of such replacements or repairs). Under no circumstances will BTM be held responsible for any consequential damages.

The warranty is limited to the repair or replacement of the defective part(s) and does not include installation.

This warranty is the only warranty extended by the seller in connection with any sale made hereunder and is in lieu of all other warranties, express, implied or statutory including warranties of merchantability and fitness for purpose.

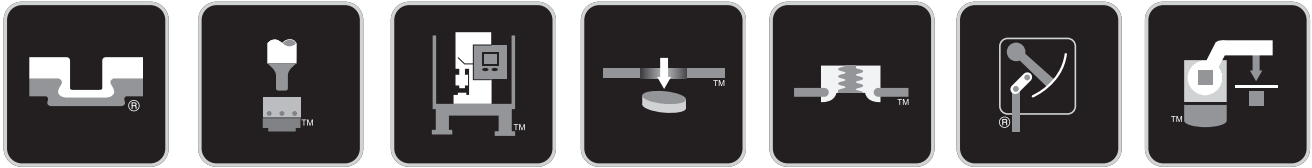
## BTM ALSO OFFERS XPC PIN LOCATOR CLAMPS



XPC Clamps are Locking Pin Locator Clamps designed with multiple extension lengths to protrude up into hard to reach locator holes while keeping the bulk of the drive cylinder away from the work area.

Model	Hole/Slot Range	Locking	Manual Option Available
XPC	24.8-40mm	Yes	Yes

# CONTACT YOUR LOCAL BTM SALES TEAM FOR SUPPORT



Clinching | Clinch Tooling | Clenching, Piercing & Fastener Equipment | Presses & Press Units | Work Holding

<b>LOCAL</b> Customer Relationships & Project Support		
<b>LOCAL</b> Application Expertise Supported By Globally Shared Expertise	<b>LOCAL</b> Engineering & Manufacturing For Project Specific Content	<b>LOCAL</b> After-Sales Support Leveraged For Global Coverage
<b>GLOBAL</b> Shared Research & Technology Development		
<b>GLOBAL</b> Manufacturing For Scale Optimized Content		



**BTM**<sup>®</sup>  
COMPANY  
USA | CANADA  
Global Headquarters  
btmcomp.com  
sales@btmcomp.com  
+1.810.364.4567

**BTM**<sup>®</sup>  
EUROPE  
btm-europe.de  
info@btm-europe.de  
Head Office: +49 2943 9790-0  
Branch Office: +49 7841 68136-0

**BTM**<sup>®</sup>  
KOREA  
btmkorea.com  
betem@btmkorea.com  
+82 31 477 4202

**BTM**<sup>®</sup>  
MEXICO  
btmcomp.com  
salesmx@btmcomp.com  
+52 442 341 5601

**BTM**<sup>®</sup>  
SCANDINAVIA  
btmscand.se  
btm@btmscand.se  
+46 480-868 75

**BTM**<sup>®</sup>  
SOUTH AMERICA  
gptech.ind.br  
contato@gptech.ind.br  
+5547 3425 8716

**BTM**<sup>®</sup>  
UNITED KINGDOM  
btm-europe.de  
info@btm-europe.de  
+49 2943 9790-0

**HR** Hawker  
Richardson  
AUSTRALASIA  
hawkerrichardson.com.au  
web@hrltd.com.au  
+61 1300 36 00 31

**dkPOWER**<sup>®</sup>  
TURKEY  
dkpower.com  
dk@dk-power.com  
+90 224 482 40 40

**HERON**<sup>®</sup>  
CHINA  
heronwelder.com  
bill@heronwelder.com  
+86 136 02866179

**TECNOPRESS**<sup>®</sup>  
MEXICO  
technopress.com.mx  
+52 55 53632758

**FOR REST OF WORLD, CONTACT BTM COMPANY**